



City of Escanaba Michigan

Facilities Booklet



*Enhancing the enjoyment and livability of our community
by providing quality municipal services to our citizens.*

2022



City of Escanaba Recreation Facilities

PREPARED BY:
CITY OF ESCANABA
ENGINEERING DEPARTMENT
415 LUDINGTON STREET, ESCANABA, MICHIGAN 49829
(906) 786-3785 FAX: (906) 786-0055



Revision Date: 06/2022



The Bay College Soccer Fields are located near Bay de noc Community College. The facility was constructed in 2008. The complex has a parking lot.



Located off
College
Avenue at Bay
College

► Bay College Soccer Fields

AMENITIES

Two full-size soccer fields 120 by 70 yards or four junior size soccer fields 70 by 50 yards

Portable restroom during season

Irrigation system

Professional soccer nets

Pavilion with concession stand

Large parking lot available

Walking trail and labyrinth located nearby

Water fountain on site

Bleachers





The Catherine Bonifas Civic Center holds the Recreation Department Office. Business hours are from 7:30 a.m. to 4:00 p.m. Monday to Friday.

Civic Center Attendants supervise the after school program from approximately the beginning of September to the beginning of May from 2:30 p.m. to 6:30 p.m. Monday through Friday and 12:00 p.m. to 6:30 p.m. on Saturdays.

The Community Action Agency's Senior Center is operated at the Catherine Bonifas Civic Center.

Figure skates, hockey skates and snow shoes are available for use at no charge. There are a variety of sizes to choose from. Discs for disc golf are also available for use at no charge.



Located at
225 North
21st Street



Catherine Bonifas Civic Center

AMENITIES

Gameroom to include table tennis, foosball, pool tables, bean bags, air hockey and various board games

Gym

Locker rooms with shower facilities (6 showers in men's room and 2 showers in women's room)

Meeting rooms available to rent

State of Michigan certified kitchen

Indoor archery/indoor pistol range

Senior Center activities

Scheduled volleyball, basketball, aerobics and pickleball

Outside handicap picnic tables

Take a book—share a book program

Free WiFi

Laptops available

Lighted outdoor ice rink



The dog park is a 1.5 acre area surrounded by a five foot fence for off leash dogs.

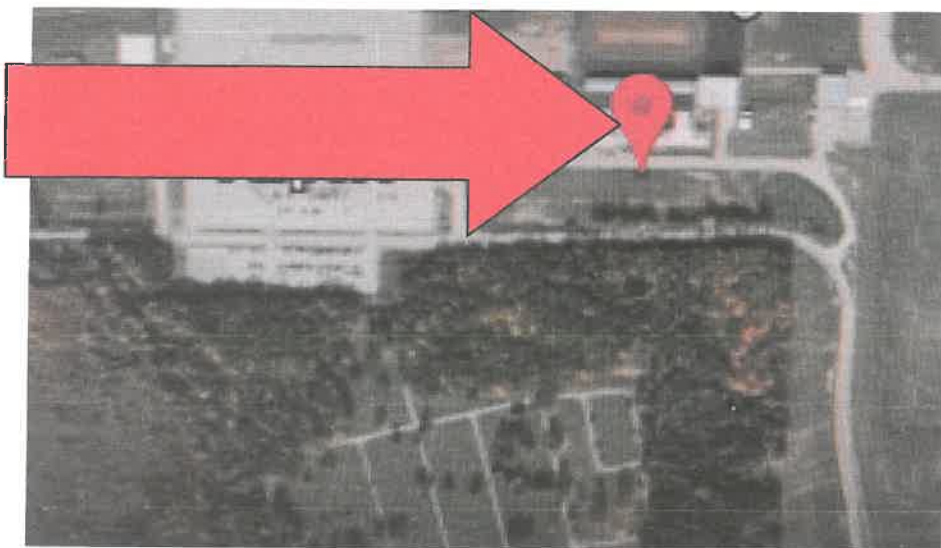
There is a small dog area consisting of approximately half an acre for 17" or less at shoulder. There is a large dog area consisting of one acre. For 17" or more at shoulder.

Hours are dawn to dusk.

► City of Escanaba Dog Park



Located off of
Highway M35
by the Delta
County
Airport



Dickson Baseball Field is a modern, updated baseball facility.

► Dickson Baseball Field

AMENITIES

Baseball field with fencing 200' from home plate with an irrigation system, press box, concession, dug outs and an electronic scoreboard

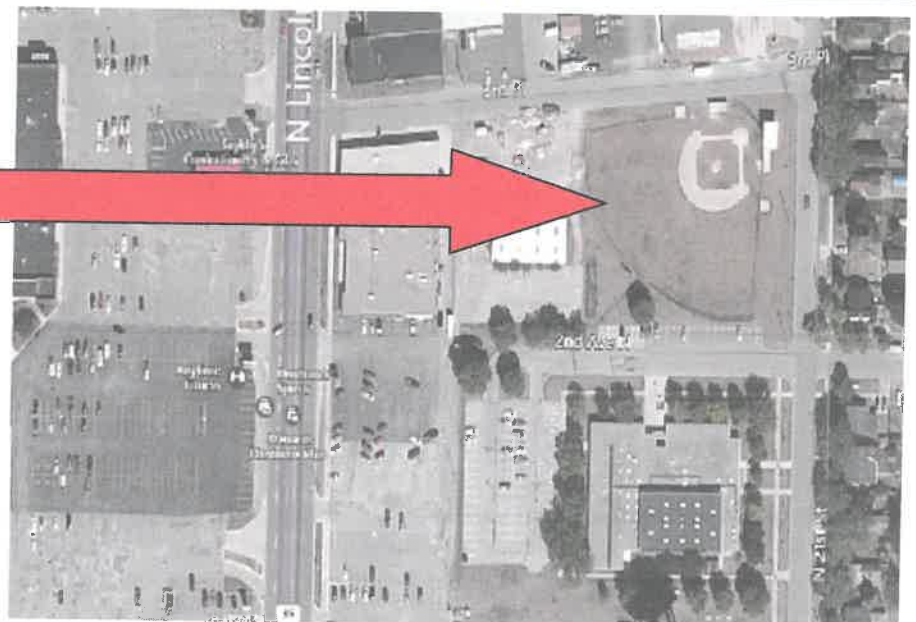
Portable restroom on site during spring/summer/fall weather

On-street and off-street parking available

Water fountain on site

Bleachers on site

Located at the corner of 2nd Avenue North and North 21st Street





The beach opens in early June and closes in mid-August.

Typical hours are as follows when weather permits:

Seven days a week

12:00 p.m. to 7:00 p.m.

When WSI (Water Safety Instructors) are available swim lessons are offered for a fee during the summer.

Located on
Aronson
Island in
Ludington
Park



▶ Escanaba Municipal Beach

AMENITIES

Supervised during summer seasons

Restroom facility with showers and changing area

Outside rinse area

Three large parking lots

Water fountain

Handicap picnic table and plenty of picnic tables throughout area

Benches

Wood boardwalk

Handicap mobi mat to gain access to the beach area

Bike rack

Playground area





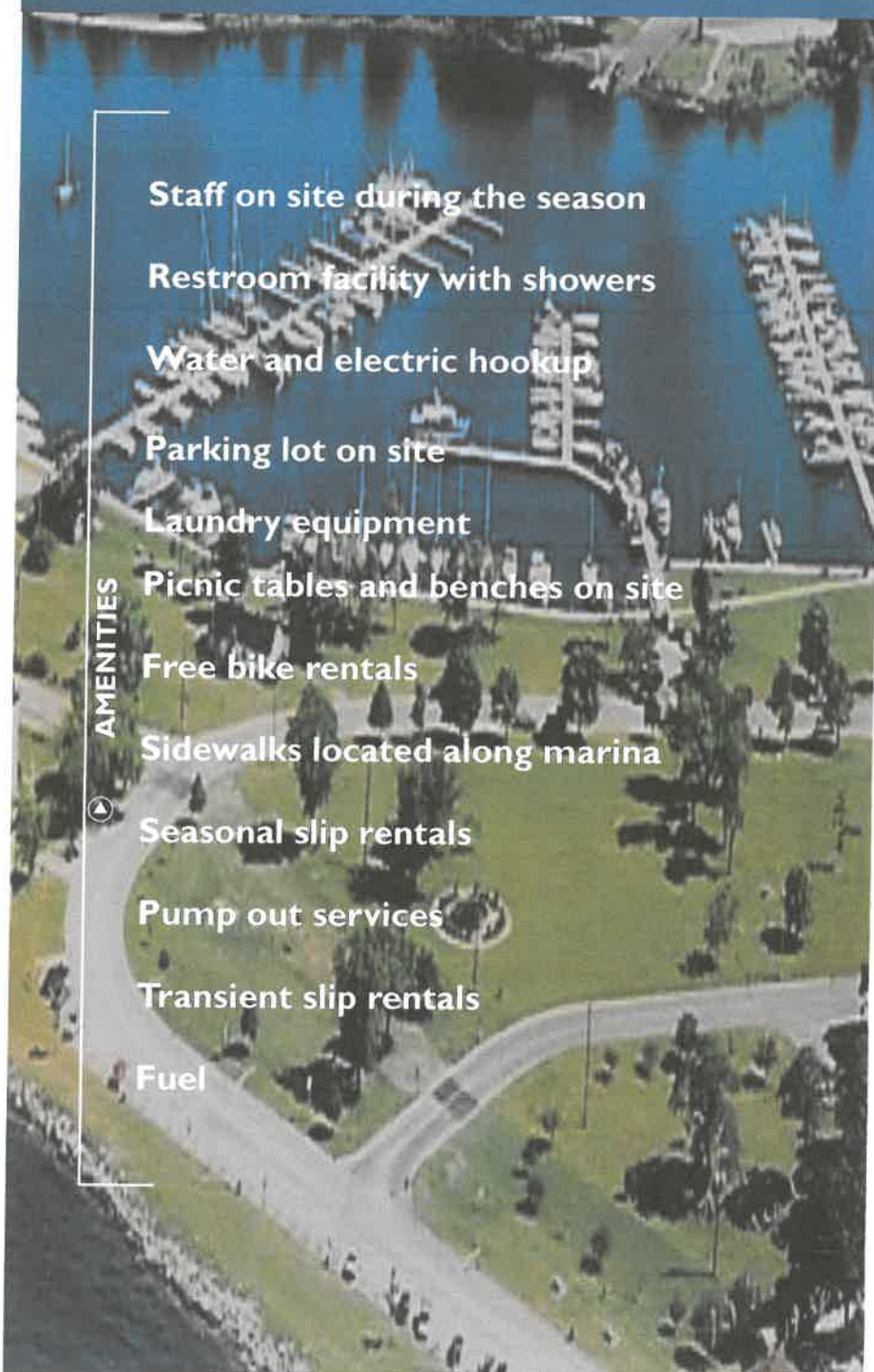
The City of Escanaba owns and operates a marina which has 165 slips, including areas used to broadside tie against the basin seawall. The Municipal Marina offers a full array of services, including seasonal slip rental, transient slip rental, fuel, pump out services, bath facilities, water and electric hookup and laundry equipment.

The season opens from early May to beginning of October.

Located on
the East side
of Ludington
Park



▶ Escanaba Municipal Marina





This facility is suitable for children of all ages.

The playground is barrier-free and nearly all features are handicapped accessible. Slides, transfer points, swings and playground cover are suitable for the mobility impaired.

There are additional swing sets nearby and lots of green space available.

Harbor Hideout was designed and constructed by local volunteers and area school children.



Located at the
East side
within
Ludington
Park

▶ Harbor Hideout Playground

22,500 square foot children's adventure facility

Pavilion, tennis courts, basketball court, disc golf, volleyball courts nearby

Restrooms nearby

Parking lot nearby with direct on-street parking available

Potable water nearby

Grills and picnic tables nearby

Spring/summer/fall concession on site

AMENITIES





Come and enjoy John D. Besse Park.

The pavilion is ideal for picnics, birthday parties and graduation parties, reunions, company outings and other group activities.

Advance reservations required for pavilion reserved use. One-half day reservation fee is \$75 resident and \$100 non-resident from 7:30 a.m. to 4:00 p.m. or 4:00 p.m. to 11:00 p.m. Full day reservation fee is \$100 resident and \$125 non-resident. All events will be posted accordingly for reservations made. Please call the Recreation Department to make reservations (906) 786-4141.

Located at the corner of 8th Avenue South and South 30th Street



John D. Besse Park

AMENITIES

1,728 s.f. covered pavilion

Nine 8-person picnic tables

Handicap accessible

Handicap portable restroom on site during spring/summer/fall season

110 volt electric service

Potable water

One large and two small barbeque grills

Parking for 22 spaces, including handicap parking

Volleyball court, nine-basket disc golf course, tether ball and very modern children's playground area

Dog bag dispenser





Lemerand Park has a modern, updated baseball facility with a pavilion/concession stand area with plenty of picnic tables and bleachers.

The baseball field is primarily used for all levels of girls' softball and t-ball.

The baseball field is owned and operated by the Escanaba Area Public High School.

The playground area is owned and operated by the City of Escanaba.



**Located at
18th Avenue
South and
South 21st
Street**



► Lemerand Park

Three baseball fields with fencing

Playground area

Irrigation system

Press box

Concession stand

Dug outs

Lighted scoreboard

Covered pavilion area

Restrooms

Parking lot on site

One pickleball court

Water fountain

Bleachers

AMENITIES





Ludington Park is a 120 acre parcel and is open daily from 7:30 a.m. to 11:00 p.m. The area offers a great location for picnics, gatherings, school outings, etc.

There is also a boat launch with marina for seasonal berths and transient berths. Fishing, ice-fishing and barrier-free fishing pier within the park facility.

Dr. John and Mary Jane Beaumier historical museum and Ludington Park Lighthouse are located nearby.

There is approximately 4.5 miles of pathways around Ludington Park.

Two expression swings and Kiwanis musical equipment are also located within the Park.

Located at the corner of Ludington Street and Lake Shore Drive towards the East of the City



▶ Ludington Park

AMENITIES

Restrooms and portable restroom during season

On-street parking available with parking lots throughout

Sidewalks

Drinking fountains

Picnic tables

Two sand volleyball courts

Four multi-use lighted regulation sized tennis courts and pickleball courts with adjustable nets

One basketball court

Informal baseball field and soccer field

Nine-basket disc golf course (discs can be checked out at the Civic Center free of charge)

Covered pavilion

Gazebo

Karas Bandshell with City band concerts on Wednesday evenings during the summer and various music events throughout summer season

Playground areas

Swimming beach with restrooms, showers and changing area

Water fountain

Cross country ski trail in winter months

Dog bag dispensers



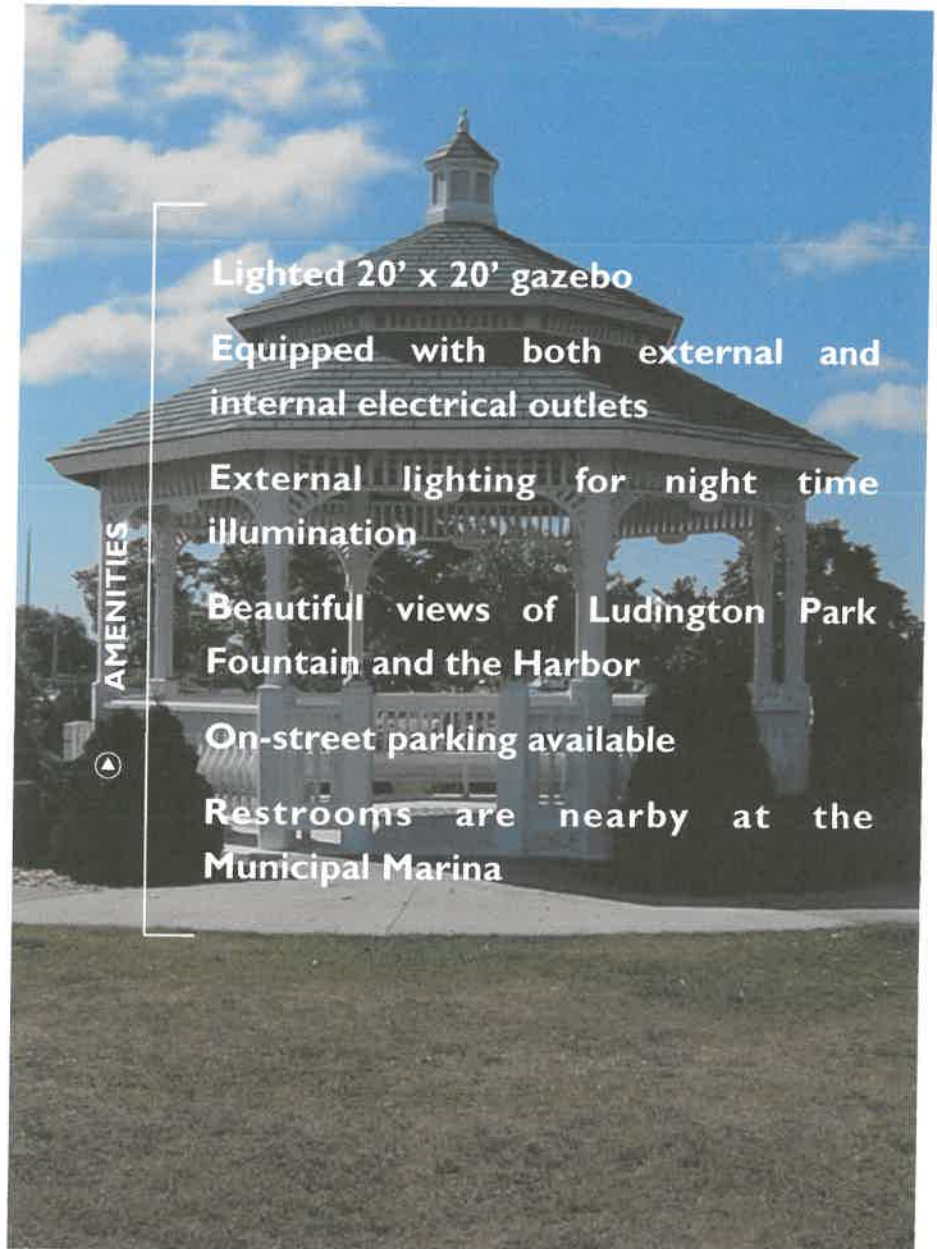


Advance reservations required for family socials, weddings, photo opportunities, picnics and outings. \$50 for 2 hours for resident and \$75 for 2 hours for non-resident. Hours available are from 7:30 a.m. to 11:00 p.m. Please call the Recreation Department to make reservations (906) 786-4141.



Ludington Park (near the North-East end of park)

► Ludington Park Gazebo



Lighted 20' x 20' gazebo

Equipped with both external and internal electrical outlets

External lighting for night time illumination

Beautiful views of Ludington Park Fountain and the Harbor

On-street parking available

Restrooms are nearby at the Municipal Marina





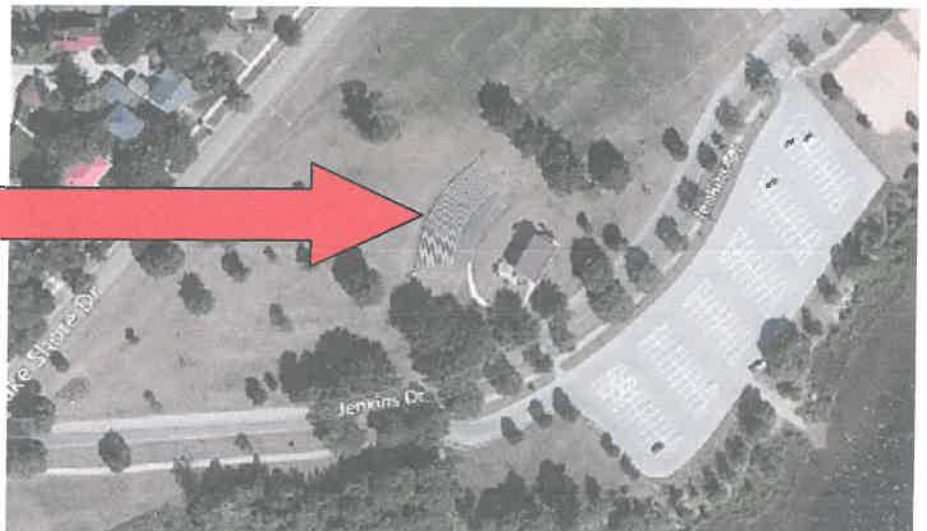
The Karas Band Shell is a multi-use facility capable of accommodating performances, plays, concerts, religious functions, family socials, events or other ceremonies.

Advance reservations are required. One-half day reservation fee of \$75 for resident and \$100 for non-resident. Full day reservation fee of \$100 for resident and \$125 for non-resident. Hours available are from 7:30 a.m. to 4:00 p.m. or 4:00 p.m. to 11:00 p.m. Please call the Recreation Department to make reservations (906) 786-4141.



Ludington Park (near the North-East end of park)

► Ludington Park Karas Band Shell





Advance reservations required for family socials, picnics and outings. One-half day reservation fee is \$75 resident and \$100 non-resident from 7:30 a.m. to 4:00 p.m. or 4:00 p.m. to 11:00 p.m. Full day reservation fee is \$100 resident and \$125 non-resident. All events will be posted accordingly for reservations made. Please call the Recreation Department to make reservations (906) 786-4141.

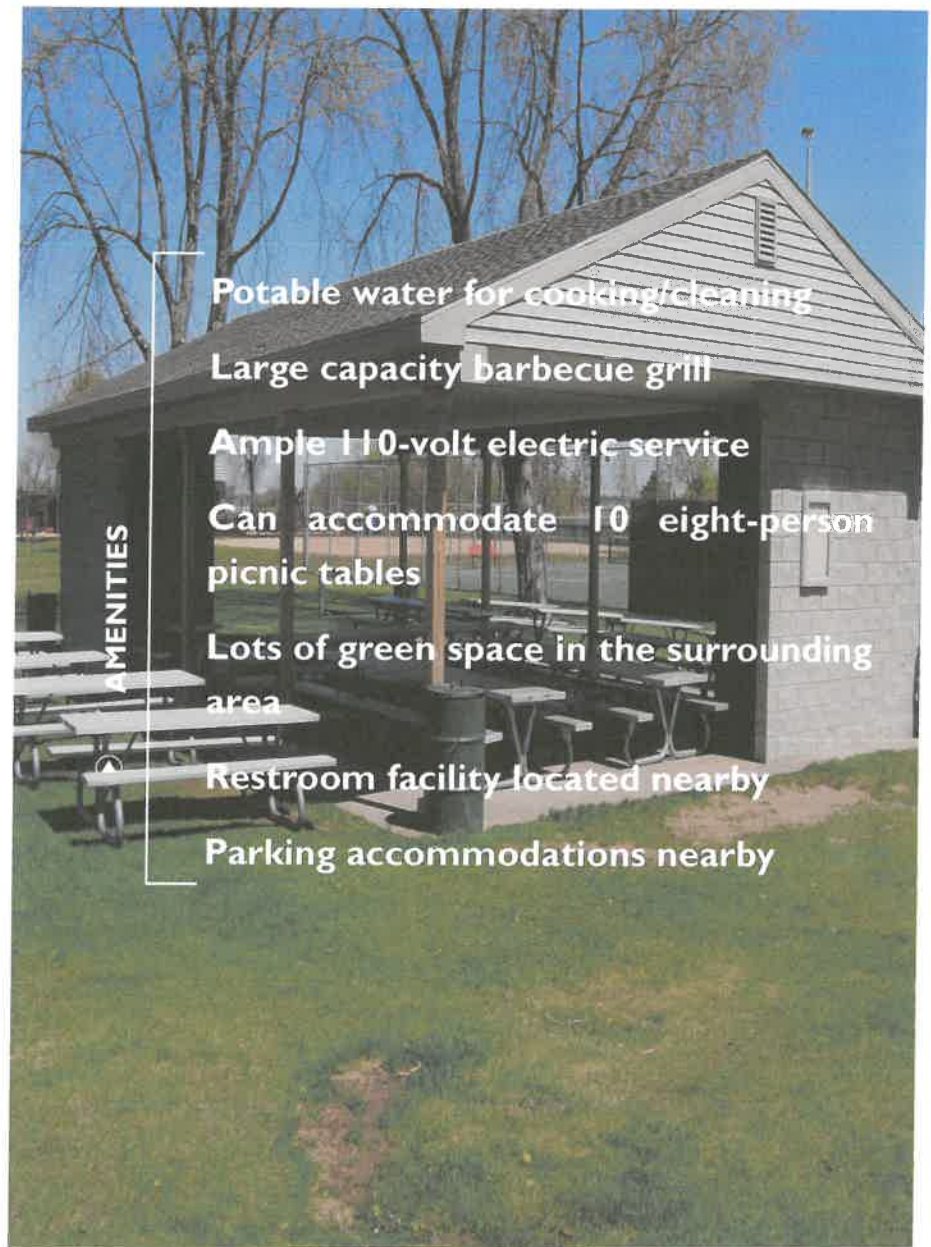
Harbor Hideout playground area, four multi-use tennis courts for tennis and pickleball, one basketball court, two sand volleyball courts, two expression swings, nine-basket disc golf course, various swings and picnic tables are located nearby within Ludington Park.

Ludington Park

(near the South end)



► Ludington Park Pavilion





Ness Field is a modern, updated baseball facility with a concession stand, restroom facility and press box.

The field is a premium boy's baseball field home to the Escanaba Eskymo High School Team and American Legion Escanaba Cubs Team.



**Located at
18th Avenue
South and
South 16th
Street**

► **Ness Field**

Baseball field with fencing 365' from home plate

Irrigation system

Press box

Concession stand

Dug outs

Electric scoreboard

Restrooms

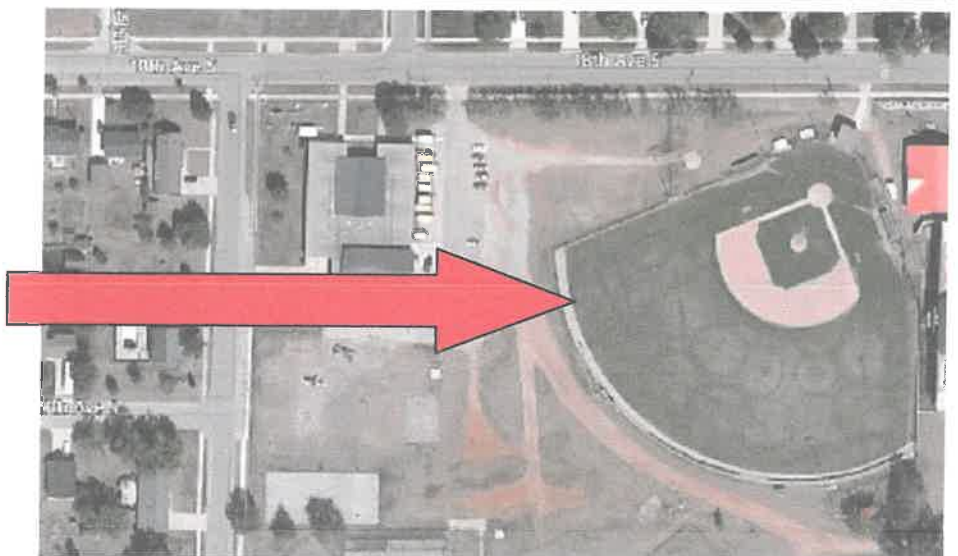
Field lighting

Parking lot on site

Water fountain on site

Bleachers on site

AMENITIES

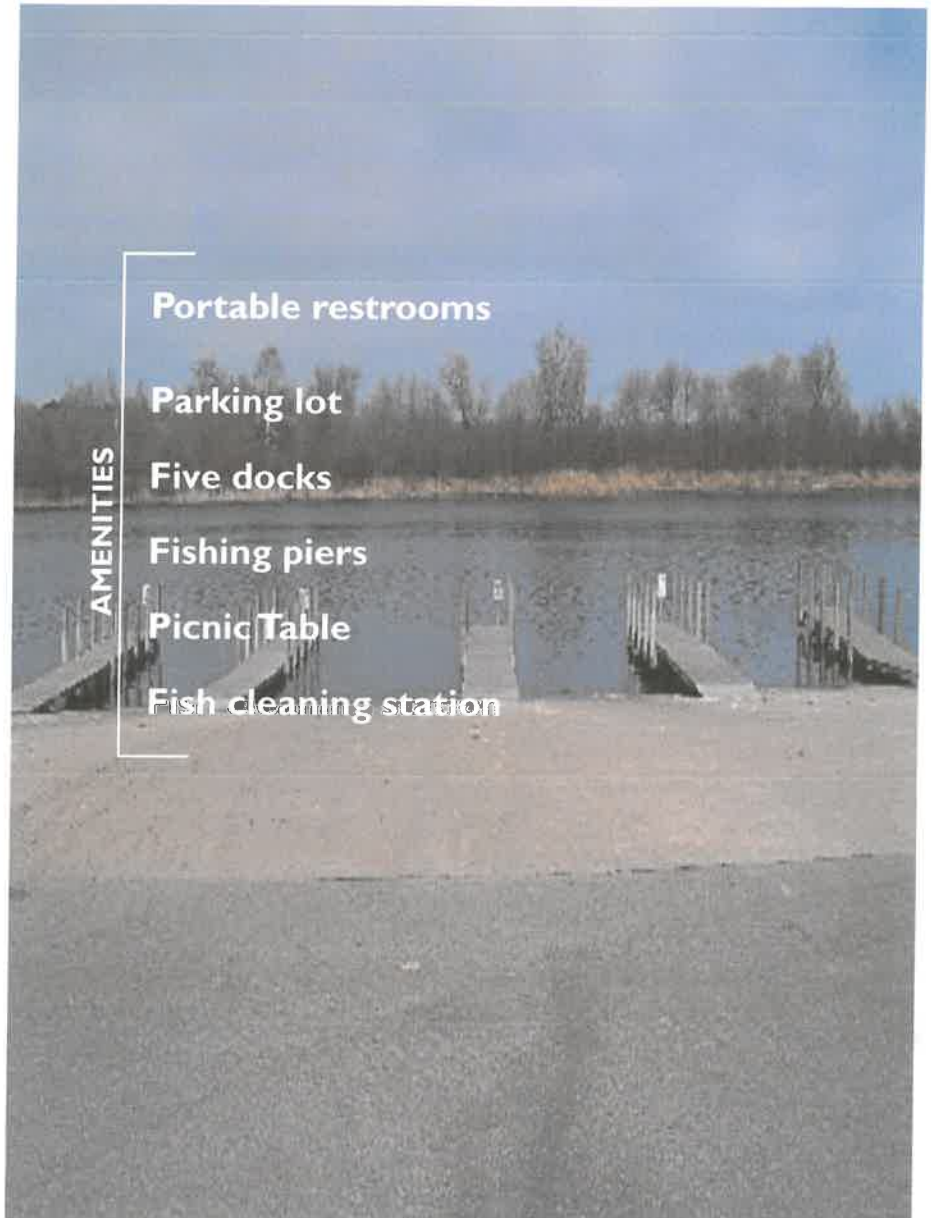




The North Shore Boat Launch features barrier-free skid pier, car/trailer parking for approximately 200. Seasonal passes are available for \$45 (also good for Aronson Island Boat Launch located in Ludington Park). Daily launch passes are \$4. Seasonal boat launch passes can be purchased at the Harbor Master Building, City Hall or the Recreation Department.

The season opens from early May to beginning of October.

▶ North Shore Boat Launch



Located on
the Escanaba
River on the
North side of
the City



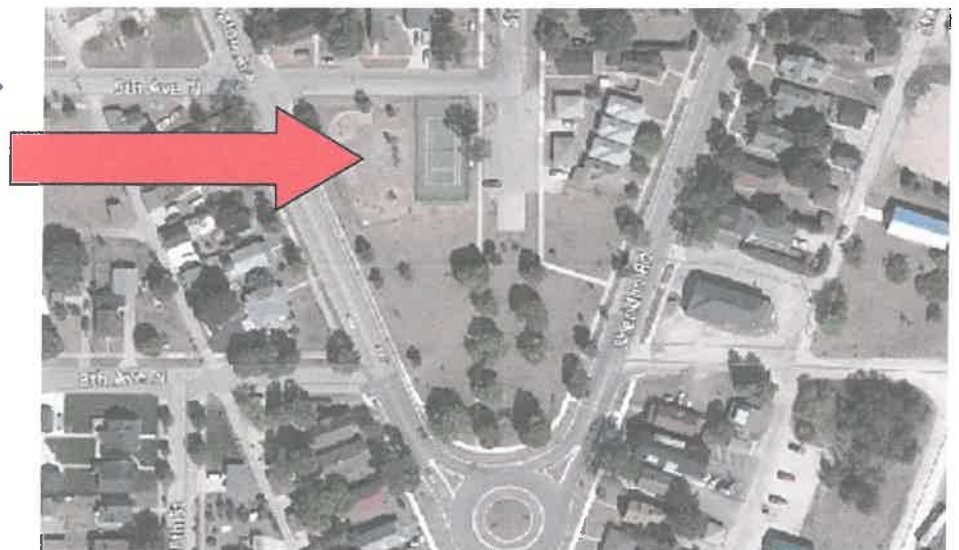


Rose Park has plenty of green space to enjoy.

There is a lock box with two portable pickleball nets. Please contact the Recreation Department to obtain the lock code.



Located at the intersection of Washington Avenue and Stephenson Avenue



Rose Park

AMENITIES

Children's playground area

Multi-use courts for one regulation sized tennis court and two pickleball courts with portable nets

Portable restroom on site during spring/summer/fall weather

On-street and off-street parking available

Water fountain on site

Benches

Picnic tables

Fenced in area



Royce Park Playground has something for everyone. Plenty of green space to have a picnic.

There is a lock box with two portable pickleball nets. Please contact the Recreation Department to obtain the lock code.



Located at
South 19th
Street and 7th
Avenue South



▶ Royce Park Playground

AMENITIES

Children's playground area

One basketball court

Baseball field with lighting and temporary fencing 170' from home plate

Multi-use courts for two regulation sized tennis courts and four pickleball courts with portable nets

Portable restroom on site during spring/summer/fall weather

On-street parking available

Water fountain

Benches

Stephenson Park Playground has something for everyone. Plenty of green space to have a picnic.

► Stephenson Park Playground

AMENITIES

Children's playground area

One basketball court

Baseball field with fencing 200' from home plate and dugouts

Portable restroom on site during spring/summer/fall weather

On-street parking available

Water fountain

Benches

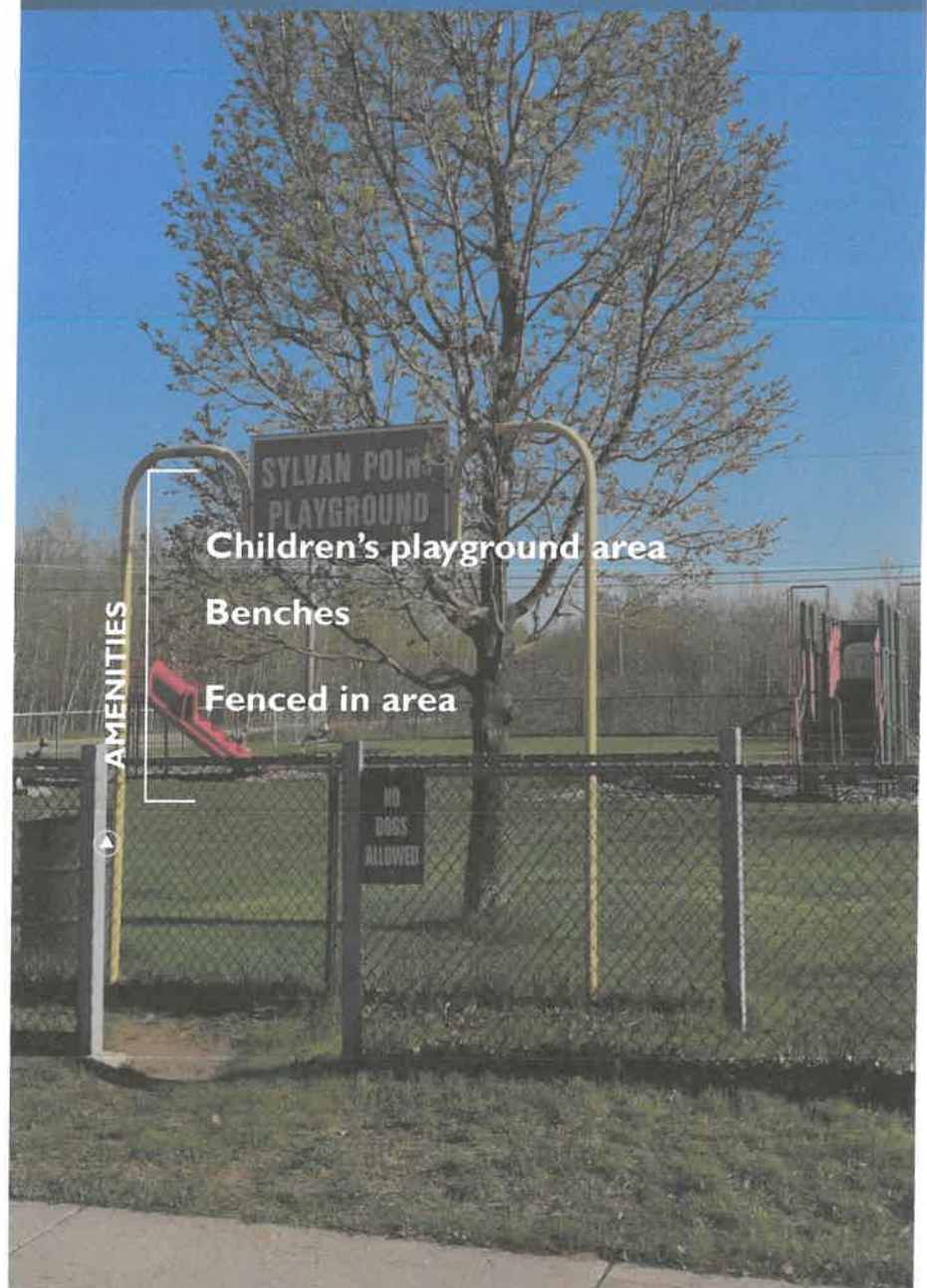
Bleachers

Located at
North 19th
Street and
15th Avenue
North



Sylvan Point Playground is a neighborhood park. There is plenty of green space to enjoy a picnic with the open space available.

► Sylvan Point Playground



Located at
intersection of
South 22nd
Street and
23rd Avenue
South



Tapani Field at Veteran's Park has something for everyone. Plenty of green space to have a picnic.

There is a lock box with two portable pickleball nets. Please contact the Recreation Department to obtain the lock code.

▶ Tapani Field at Veteran's Park

AMENITIES

Children's playground area

One-half basketball court

Multi-use for two tennis courts or four pickleball courts

Baseball field with fencing 280' from home plate with dugouts and electronic scoreboard

Portable restroom on site during spring/summer/fall weather

On-street parking available

Water fountain

Benches

Bleachers

Tree restoration area

Located on
Lake Shore
Drive and
12th Avenue
South

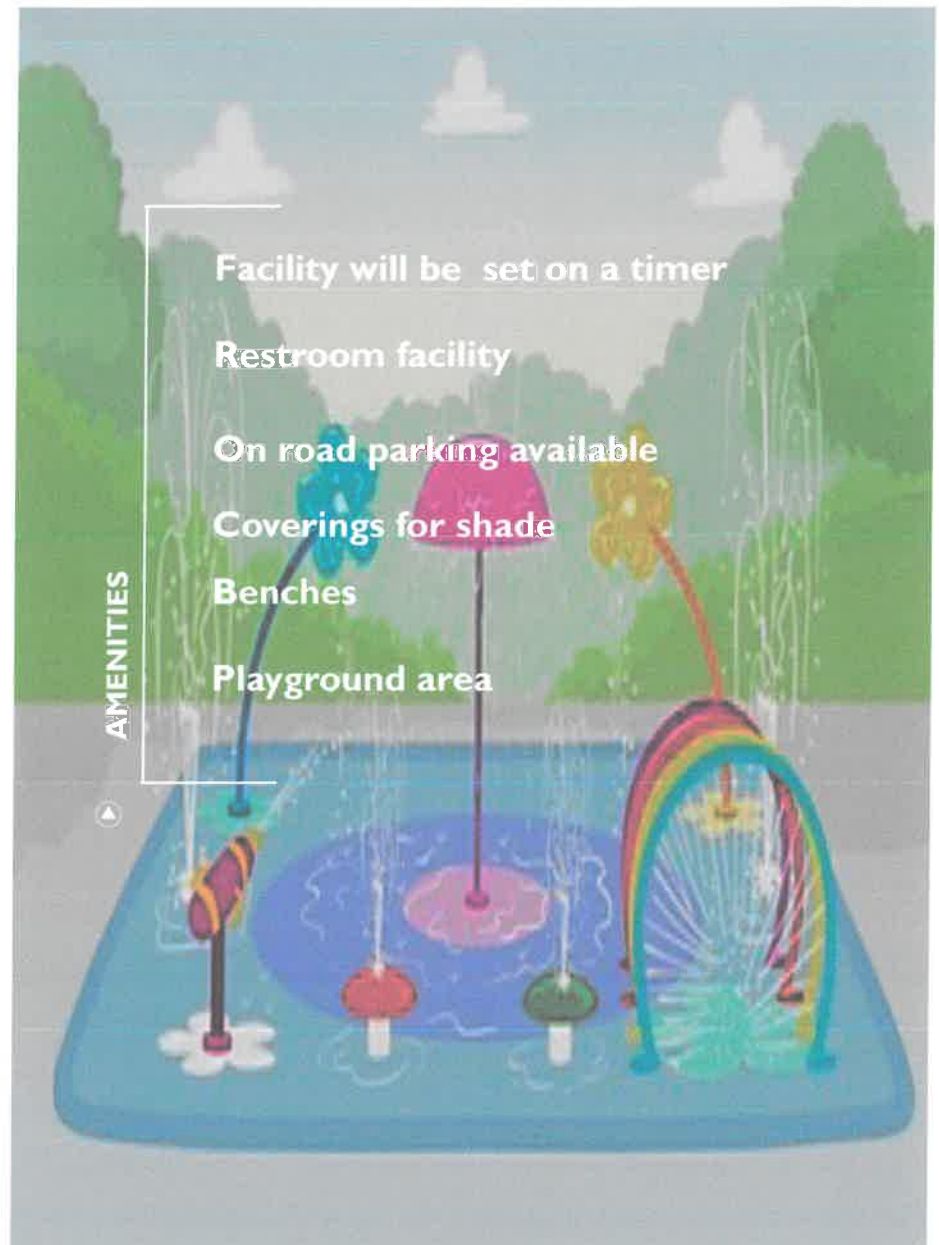




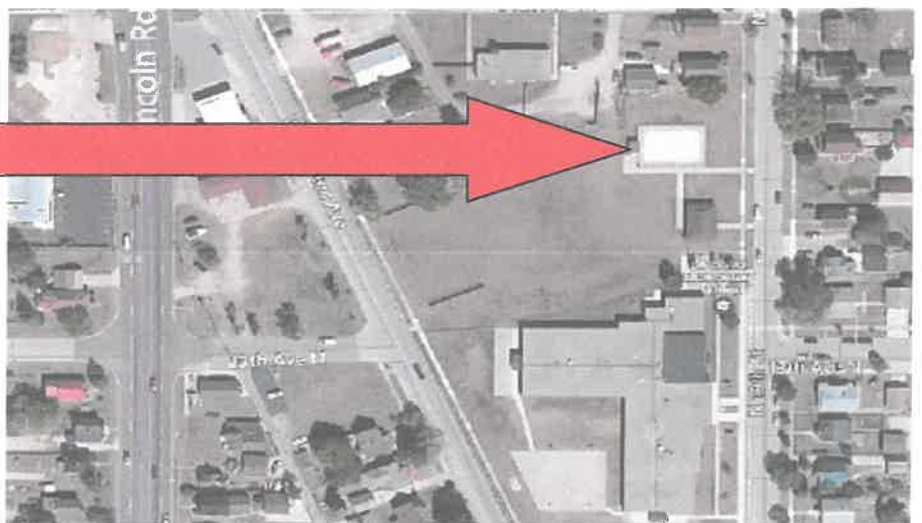
The Webster Splash Park will be constructed in 2023. This facility will be one of its kind in the area.

Splash Park will be open from middle of June to the end of August.

▶ Webster Splash Park



Located on
the 1300 block
of North 19th
Street





The West Side Non-Motorized Trails are located on the west side of town with two trail head access points—Behind the Comfort Inn and Suites parking lot on Ludington Street and off of 19th Avenue North (Landfill area) behind the Great Lakes Sports Club where there is a designated parking lot.

The snow shoe trail can be accessed off of 19th Avenue North where there is a designated parking lot. The trail is approximately 2.5 miles. Snow shoes can be checked out at the Catherine Bonifas Civic Center at no cost for up to 48 hours.

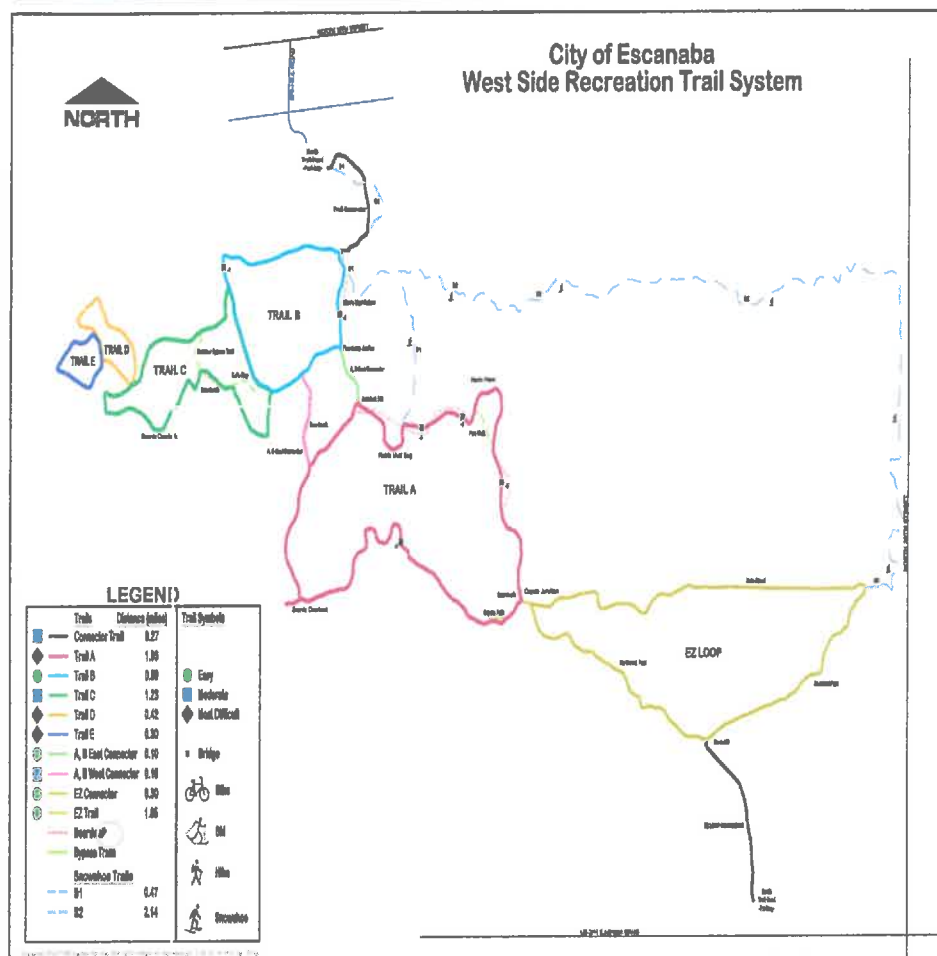
Approximately 2000' of raised boardwalk.

A large majority of property in this approximate 5,000 acre parcel is undeveloped.

Located on
the West side
of the City



West Side Non-Motorized Trails



- *Groomed trails
- *Cross country skiing
- *Snow shoeing

Trail A 1.93 miles
Trail B 0.89 miles
Trail C 1.23 miles
Trail D 0.42 miles
Trail E 0.30 miles
EZ Trail 1.85 miles
Connectors 0.83 miles



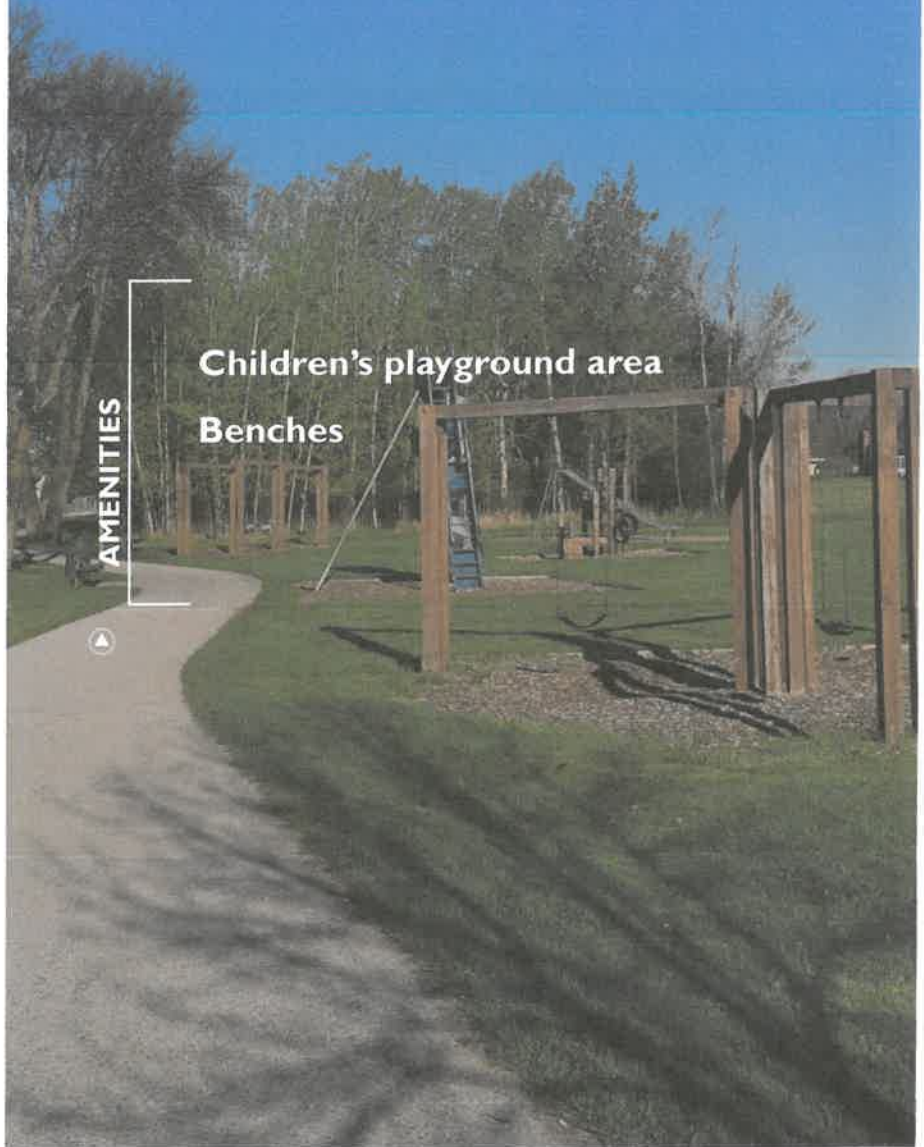


The West Side Park is a neighborhood playground. There is plenty of green space in the surrounding area to have a picnic and enjoy the open space.



Located at intersection of 5th Avenue South and South 26th Street by the Escanaba Area High School

▶ West Side Park



City of Escanaba Staff

City Hall, 410 Ludington Street, Escanaba MI 49829 (906) 786-9402

City Manager—Patrick Jordan

(906) 786-9402

citymanager@escanaba.org

Public Safety Director—Robert LaMarche

(906) 786-5912

publicsafety@escanaba.org

Human Resource Director/City Treasurer—Kim Gustafson

(906) 786-0552

hr@escanaba.org

Water/Wastewater Superintendent—Jeff Lampi

(906) 786-3291 and (906) 786-1301

water@escanaba.org

Public Works Director/City Engineer—Wendy Taavola

(906) 786-1842

publicworks@escanaba.org

Electric Superintendent—Gerald Pirkola

(906) 786-0061

cityelectric@escanaba.org

City Clerk—Phil Demay

(906) 786-1194

clerk@escanaba.org

City Assessor—Jim McNeil

(906) 786-9402

assessor@escanaba.org

City Controller—Melissa Becotte

(906) 786-0605

controller@escanaba.org

Library Director—Carolyn Stacey

(906) 789-7323

epl@uproc.lib.mi.us

Recreation Director—Kimberly Peterson

(906) 786-4141

recreation@escanaba.org

