

CITY OF

Escanaba



RECREATION PLAN | 2021-2026



RESOLUTION OF ADOPTION

Excerpt of the minutes of a regular meeting of the Escanaba City Council held on December 16, 2021 at 7:00 p.m.

Present: Mayor Mark Ammel, Council Members, Ronald J. Beauchamp, Tyler DuBord, Todd Flath, and Karen Moore

Absent: None

“NB-1 By Council Member Moore, seconded by Council Member DuBord;

RESOLUTION 21-17

City of Escanaba Resolution of Adoption For the City of Escanaba Five-Year Recreation Plan Delta County December 16, 2021

WHEREAS, the City Council is made up of representatives from the City of Escanaba, and

WHEREAS, the City of Escanaba's Recreation Advisory Board began the process of developing a community recreation and natural resource conservation plan in accordance with the most recent guidelines developed by the Department of Natural Resources and made available to local communities, and

WHEREAS, residents of the City of Escanaba were provided with a well-advertised opportunity during the development of the draft plan to express opinions, ask questions and discuss all aspects of the recreation and natural resource conservation plan, and

WHEREAS, the public was given a well-advertised opportunity and reasonable accommodations to review the final draft plan for a period of at least 30 days, and

WHEREAS, After the 30-day public review and comment period, the City of Escanaba's Recreation Advisory Board reviewed the final draft of the recreation plan and approved the plan for final adoption by the City Council, and

WHEREAS, a public hearing was held on November, 9, 2021, at the Catherine Bonifas Civic Center, 225 North 21st Street, Escanaba, MI by the Recreation Advisory Board to provide an opportunity for all residents of the planning area to express opinions, ask questions and discuss all aspects of the City of Escanaba's Parks and Recreation Plan, and

WHEREAS, after the public hearing, the Escanaba City Council voted to adopt said City of Escanaba Parks and Recreation Plan for 2021 through 2026.

NOW, THEREFORE BE IT RESOLVED the Escanaba City Council hereby adopts the City of Escanaba Parks and Recreation Plan.

RESOLUTION OF ADOPTION

Upon a call of the roll, the vote was as follows:

Ayes: Moore, DuBord, Beauchamp, Flath, Mayor Ammel

Nays: None

RESOLUTION DECLARED ADOPTED.”

I the undersigned, being duly qualified and acting City Clerk of the City of Escanaba, do hereby certify that the foregoing constitutes a true and complete copy of a resolution adopted by the Escanaba City Council and the City of Escanaba, County of Delta, Michigan, at a regular City Council Meeting held on Thursday, December 16, 2021, and that said meeting was conducted and public notice was given pursuant to and in full compliance with the Open Meeting Act, Act 267, Public Acts of Michigan, and that the minutes of said meeting were kept and will be or have been made available as required by said Act.


Phil DeMay, City Clerk



table of contents

- 1 INTRODUCTION** | A VISION FOR PARKS AND RECREATION IN ESCANABA
 - 2 COMMUNITY DESCRIPTION** | DESCRIPTION, DEMOGRAPHICS + DATA
 - 3 NATURAL ENVIRONMENT** | LANDSCAPE FEATURES, SOILS, VEGETATION, + WILDLIFE
 - 4 ADMINISTRATIVE STRUCTURE**
 - 5 RECREATION INVENTORY**
 - 6 COMMENTS + ISSUES SCOPING**
 - 7 GOALS + OBJECTIVES**
 - 8 ACTION PLAN** | PRIORITY PROJECTS
- APPENDIX A** | PUBLIC NOTICE + COMMUNITY SURVEY RESULTS
- APPENDIX B** | GRANT HISTORY
- APPENDIX C** | UNIVERSAL ACCESS DESIGN GUIDELINES + PARK ACCESS ANALYSIS

THIS PAGE INTENTIONALLY LEFT BLANK

1 The Recreation Plan

STATEMENT OF PURPOSE

Every 5 years communities throughout Michigan update their recreation plans to ensure qualification for annual Michigan Department of Natural Resources (MDNR) funding opportunities.

The 5 year recreation plan must adhere to a format defined by the MDNR and outline priority goals, objectives, and projects with the potential to be completed within the 5 year window and beyond.

This document synthesizes data on natural resources, community demographics, existing recreation assets, operational management, citizen input, and community

partnerships to generate an all-inclusive map for recreation in the community. It describes community values, highlights common goals and objectives, and outlines strategies to achieve these goals.

Looking beyond the 5-year window, this document will serve as a road map for future endeavors improving parks for decades to come. The 2021-2026 Recreation Plan will assist City officials in determining priority projects to nurture an already expansive parks system. It will outline strategies for making parks accessible to all and provide park designs that allow future generations to grow and prosper within.

2021 KEY FINDINGS



Residents per Playground:
3,607

Full-Time Equivalent Employees (FTEs) per 10,000 Residents:

8.2



Operating Expenditures per Capita:

\$88.30/year

Acres of Parkland per 1,000 Residents: **9.9**

58%

of park and recreation agencies deliver STEM programming to youth and young adults

The National Recreation And Park Association [NRPA] has assembled a 2021 Agency Performance Review featuring park metrics throughout the nation. The goal of this document is to help local park systems identify the optimal mix of facilities and programming for their community. Stay on the lookout for these blue boxes as they feature data illustrated in the NRPA 2021 Review.

Residents per Park:

2,277



Revenue to Operating Expenditures:

22.9%



Planning Process

CITY OF ESCANABA

CITIZEN SURVEYS

AND A PUBLIC
WORKSHOP EVENT

DATA GATHERING

NATURAL RESOURCE + ADA
ASSESSMENTS, RECREATION
INVENTORY + COMMUNITY
DEMOGRAPHICS

ESTABLISH A TEAM

IDENTIFY COMMUNITY
BASED RECREATION
STAKEHOLDERS

FEBRUARY-MARCH 2021

SYNTHESIZE

GENERATE A SERIES OF GOALS
+ OBJECTIVES REFLECTING ON
INFORMATION GATHERED IN THE
FIRST PHASE OF THE PLANNING
PROCESS

PRIORITIZE

CREATE AN ACTION PLAN
FEATURING PRIORITY PROJECTS
THAT WILL ACHIEVE THE GOALS
+ OBJECTIVES

JUNE-JULY 2021

DRAFT PLAN

WRITE THE DRAFT PLAN
COMPLETE A THOROUGH
REVIEW WITH THE PLANNING
COMMITTEE

PUBLIC COMMENT

MAKE THE DRAFT PLAN
READILY AVAILABLE TO THE
PUBLIC FOR A 30 DAY REVIEW
PERIOD

FINAL DRAFT PLAN

MAKE ANY NOTED CHANGES
AND COMPLETE A FINAL
COMMITTEE REVIEW

JULY-SEPT 2021

PUBLIC HEARING AND ADOPTION

ADVERTISE PUBLIC HEARING 30
DAYS PRIOR TO HOSTING; PROVIDE
OPPORTUNITY FOR PUBLIC TO
COMMENT THEN CLOSE HEARING
BEFORE MAKING A MOTION TO
APPROVE FOR ADOPTION BY THE
CITY COUNCIL

NOVEMBER 2021

Enhancing the Economy

A RECREATION BOOM FOR THE RURAL ECONOMY

‘A BILLBOARD FOR THE U.P.’

-DAN B. JONES; THE DETROIT NEWS

“(The U.P. tourism industry) was booming last year (2020), even if COVID-19 restrictions like takeout-only or limited-capacity restaurants and social distancing muted the full financial benefits of a rush of visitors. State and local officials are bracing for another surge to begin in May (2021).” -The Detroit News

One year into a global pandemic that has ravaged every corner of the planet, we realize the great potential for recreating, reflecting, and finding calm within our neighborhood parks and backyards. Despite a devastating blow to the greater tourism industry, the COVID-19 pandemic has turned our attention to recreation opportunities closer to home.

These close to home recreation opportunities are also drawing visitors from greater distances. As noted in The Detroit News article: There were many visitors, not just from the traditional markets - including the Lower Peninsula, which typically accounts for 50% to 60% of the U.P.’s visitors, as well as Milwaukee, Minneapolis, Green Bay and Chicago- but also from the West Coast and Texas among other states- ‘places we don’t typically see.”

The potential for enhancing the local economy through promoting tourism and recreation opportunities is huge. The COVID-19 stimulated spike in socially distanced outdoor tourism and surge in work from home options paired with the expansion of our U.P. broadband grid has added to a rise in home sales.

A report prepared by the MEDC by Tourism Economics in 2014, found direct spending by leisure travelers equaled \$16.6 billion-nearly 73% of all visitor spending in Michigan. As this report demonstrates local economies are stimulated by recreation access and opportunities in addition to improving a community’s health and vitality.

-Let’s keep this momentum going!



“When everything else is closed, the outdoors is open.”

*-Kathy Reynolds
(The Detroit News; 3.21.2021)*

Location Map

A VISION FOR THE CITY

The City of Escanaba is nestled along the shores of Lake Michigan's Little Bay de Noc. It is one of the largest municipalities within Michigan's Upper Peninsula and hosts a vast array of parks, a vibrant arts scene, and a historic downtown.

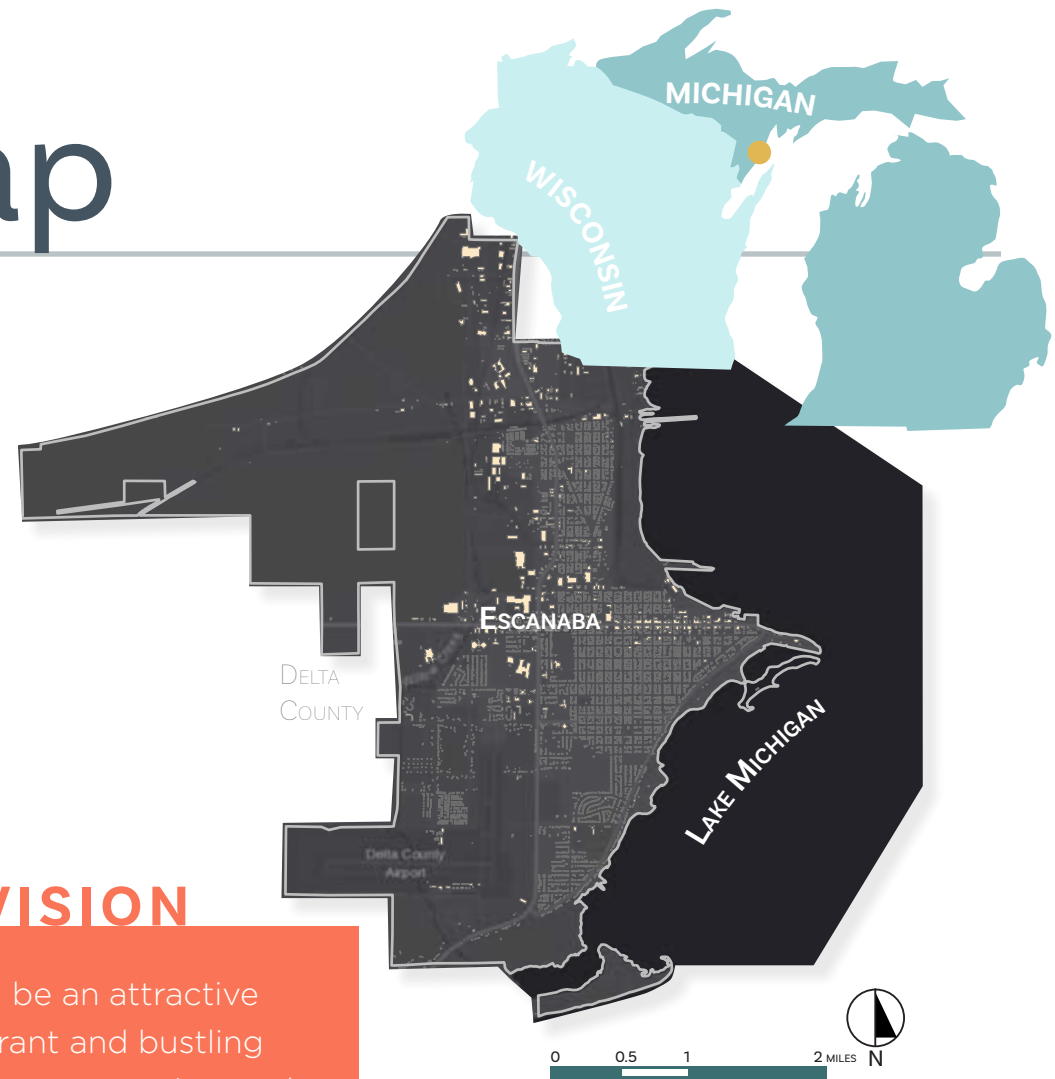
The Bay de Noc Community College, situated in Escanaba's North West corner, hosts a variety of degree programs for educational advancement and career placement.

St. Francis Hospital provides healthcare facilities and employment. Verso Corporation serves as the largest employer within Escanaba's Delta County. The deep water working port is a regional shipping portal for the many natural resources extracted from the Upper Peninsula.

Projecting forward, the City of Escanaba drafted a Community Vision during the development of their 2016 master plan. This vision highlighted nearly every aspect of natural, cultural and recreational opportunities as priorities for further enhancement.

COMMUNITY VISION

In 2036 Escanaba will be an attractive community with a vibrant and bustling downtown that has a strong connection to the waterfront. The City will have well-maintained, sustainable infrastructure, and a diverse economic base that provides opportunities for young adults and affords residents with a high standard of living. The City will be friendly to pedestrians and cyclists and home to high-quality schools, a thriving arts scene, tree lined streets, and an accessible shoreline.



2 Community Description

LOCATION + DEMOGRAPHICS

The City of Escanaba was established in the early to mid 1800's as a shipping port to support the various lumber and mineral extraction industries. It was considered a regional hub by 1883 when incorporated as a City and has maintained that role ever since. It covers about 12 square miles bordered by Lake Michigan to the east, Wells Township to the north and west, and Ford River Township to the south.

Renowned for its recreational opportunities, Escanaba hosts excellent fishing, bird watching, recreational boating, swimming, water sports, skiing, skating, hiking, and biking. The City also offers a long list of community events and recreational programs. The Bonifas Arts Center is integral to the arts and culture experience, hosting

musicians, art classes, and various outdoor events. Music Mondays and lively performances at the Municipal Dock activate Ludington Park in the summer months. More recently, movie nights in the park have also attracted a wide audience. The new marketplace pavilion on Ludington Street houses weekly farmer's markets as well as other community events. Food trucks have also become an integral part of community events.

Sports leagues practice and host tournaments in the many recreational fields maintained by the City. All ages are encouraged to participate in various leagues that run year round. The Catherine Bonifas Civic Center provides a destination for youth and adults alike for indoor and after school recreation opportunities as well.

source: visitescanaba.com

GET OUT THERE &

Explore

With over 200 miles of shoreline, Delta County, aka the home of VisitEscanaba, is full of adventure. Get outside and reel in [trophy-sized fish](#), [bike the trails](#), or experience the [Monarch butterfly migration](#). While in town, find your favorite things in our [local shops](#), travel back in time at our [museums](#) or sample locally crafted [wines and beers](#). And that's not all!

[More to Discover >>](#)



See The Lights



Hit The Beach



State Fair Fun in 2021!



Go Fishing



Shop

Community Data




POPULATION OVER THE DECADES

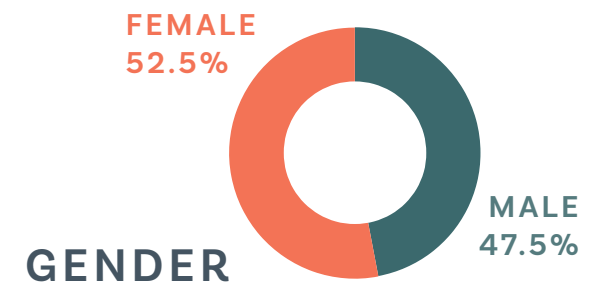
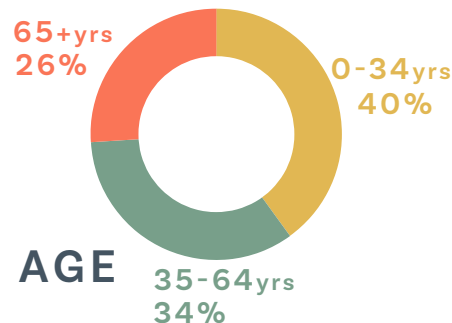
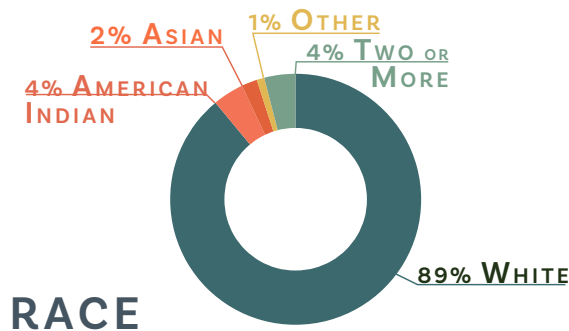
The City of Escanaba is one of the largest communities within Michigan's Upper Peninsula and serves as a hub for healthcare, shopping, and education opportunities. Despite its regional amenities and spectacular natural scenery the population of Escanaba has gradually decreased over the past 60 years. The projected 2019 population presented by the US Census is 12,251 down from 15,391 in 1960. This downward trend in population is partly due to the shrinking of mining and timber industries.

Age distribution is another figure that can prove helpful in determining appropriate recreational opportunities and locations within a community. The data presented in the adjacent graphs was procured from the US Census website, updated in 2019.

	YEAR	1960	1970	1980	1990	2000	2010	2019
CITY OF ESCANABA:	POPULATION	15,391	15,368	14,355	13,659	13,140	12,616	12,251
DELTA COUNTY:		34,298	35,924	38,947	37,780	38,520	37,069	35,784

2019 US CENSUS DEMOGRAPHIC ESTIMATES

	POPULATION	POVERTY RATE	MEDIAN HOUSEHOLD INCOME
	12,251	19%	\$35,813
	35,784	12.9%	\$47,434
	9,986,857	13.0%	\$59,584



Community Needs

SURVEY + DISABILITY DEMOGRAPHICS

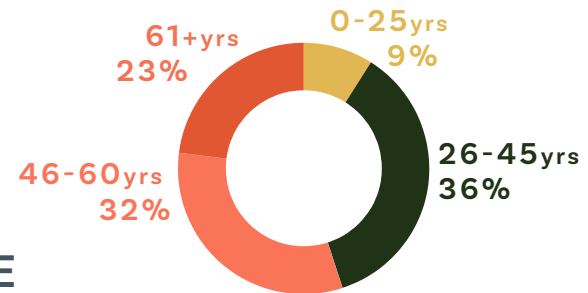
The survey results depict the greatest participation number in 26 to 45yr olds with a pretty large number of 46 to 60yr olds also contributing. There is also a much larger percentage of female participation in the survey response.

Creating inclusive recreation spaces is a priority for all of the State of Michigan and Escanaba has many opportunities to expand access to all. CUPPAD and the City of Escanaba completed an inventory of recreation facilities and their current condition regarding accessible infrastructure.

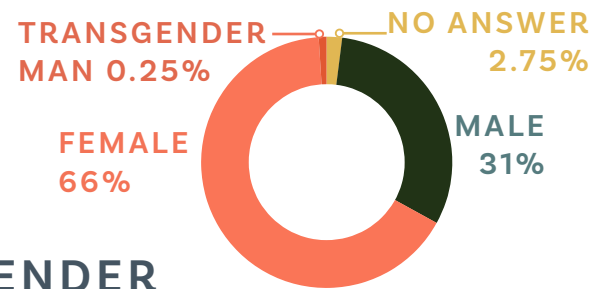
DISABILITY DEMOGRAPHICS

The current community demographics indicate 24.1% of Escanaba's population has a disability. By definition a disability can include having issues seeing, hearing, talking, walking, climbing stairs, lifting or carrying. Disabilities can also include having difficulty performing daily activities such as participating in social roles. Via providing more inclusive design solutions to public access problems, parks become a destination for all.

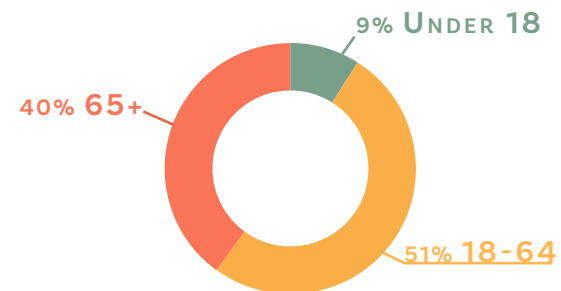
AGE



GENDER



DISABILITY | 24.1%



Community Data

ACCESSIBILITY + OTHER POLICIES

ACCESSIBILITY

The Americans with Disabilities Act (ADA) was enacted in 1990 to protect civil rights for people with disabilities. ADA includes the 2010 ADA Standards for Accessible Design to provide minimum design standards to ensure access to the built environment for people with disabilities. An excellent resource for accessibility guidelines is the U.S. Access Board website at:

<https://www.access-board.gov/ada/guides/>

All state, county and local municipalities must comply with the ADA standards when completing new construction projects, additions, or alterations. These standards are enforced through investigation of complaints filed with federal agencies.

Some common park and recreation facilities that are required to meet ADA standards include picnic facilities, pavilions, restrooms, play areas, site amenities, parking, piers + boardwalks, and pathways. Through holistic, inclusive design solutions the community will not only satisfy the required standards, but create a more welcoming site for all.

Each of the recreation facilities within the City of Escanaba was visited to determine its current accessibility rating. While each site was studied independently, there were visible trends within the community. Projects completed recently showcased many accessible upgrades including the Downtown Marketplace, Besse Park, and Portage Point Marsh. Other parks, including Ludington Park, featured scattered accessible amenities and would benefit from a more holistic approach to accessible design and implementation.

Additional accessibility recommendations and the ratings for specific sites are located on pages 23-25.

SMOKING

The Escanaba City Council approved an outdoor no-smoking ordinance in 2011 for specific locations in Escanaba, including parks where children are concentrated and city buildings. The ordinance prohibits smoking within 100 feet of city buildings, playgrounds, ballfields, the guarded beach area, Webster pool and ice rinks. The issue was first considered by the Recreation Advisory Board. The proposal was also recommended by the Citizens' Environmental Advisory Committee and the Escanaba Planning Commission. The ordinance concerns quality of life issues in the City, particularly for children. The intent is to limit where children can watch adults smoking and keep second hand smoke and cigarette butts away from buildings.

COMPLETE STREETS RESOLUTION

In January 2011, the Escanaba City Council adopted a Complete Streets resolution to improve quality of life for all residents. Complete Streets policies ensure that engineers and planners design roadways to accommodate all users, not just motorists. A complete street allows pedestrians, bicyclists, transit users and those with disabilities to easily and safely use roads in their community.

AN ACCESSIBLE BOARDWALK
+ VIEWING PLATFORM AT THE
PORTAGE POINT MARSH



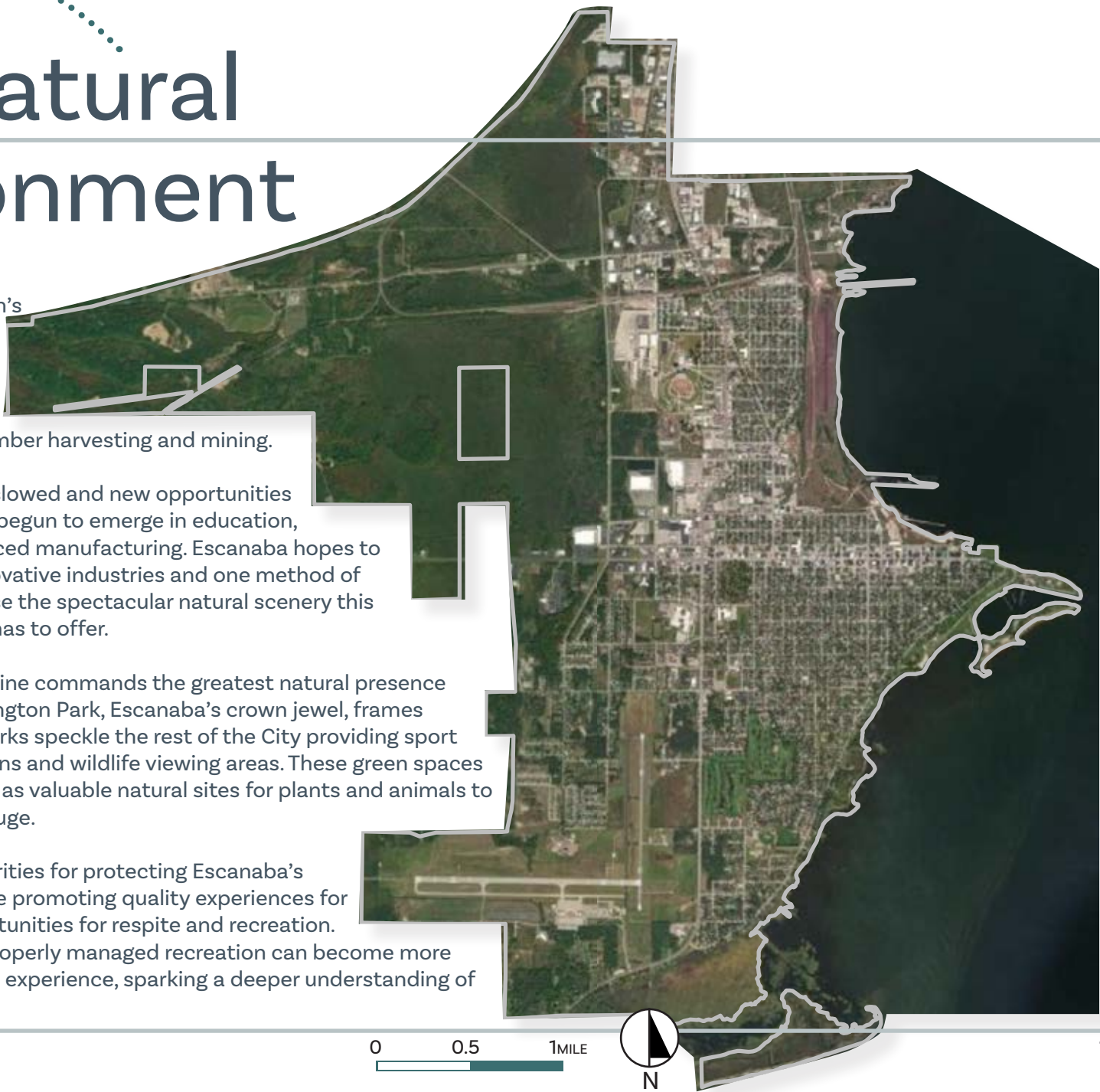
3 The Natural Environment

As in much of Michigan's Upper Peninsula, Escanaba's economy has relied heavily on the natural resource industries including timber harvesting and mining.

These activities have slowed and new opportunities for employment have begun to emerge in education, healthcare and advanced manufacturing. Escanaba hopes to attract additional innovative industries and one method of doing so is to showcase the spectacular natural scenery this small City on the bay has to offer.

Lake Michigan's shoreline commands the greatest natural presence within Escanaba. Ludington Park, Escanaba's crown jewel, frames the lakefront. Many parks speckle the rest of the City providing sport courts, play destinations and wildlife viewing areas. These green spaces within the City double as valuable natural sites for plants and animals to find food and seek refuge.

This plan outlines priorities for protecting Escanaba's natural resources while promoting quality experiences for those who seek opportunities for respite and recreation. When resources are properly managed recreation can become more than merely a physical experience, sparking a deeper understanding of the place.



The Natural Environment

GEOLOGY + SOILS

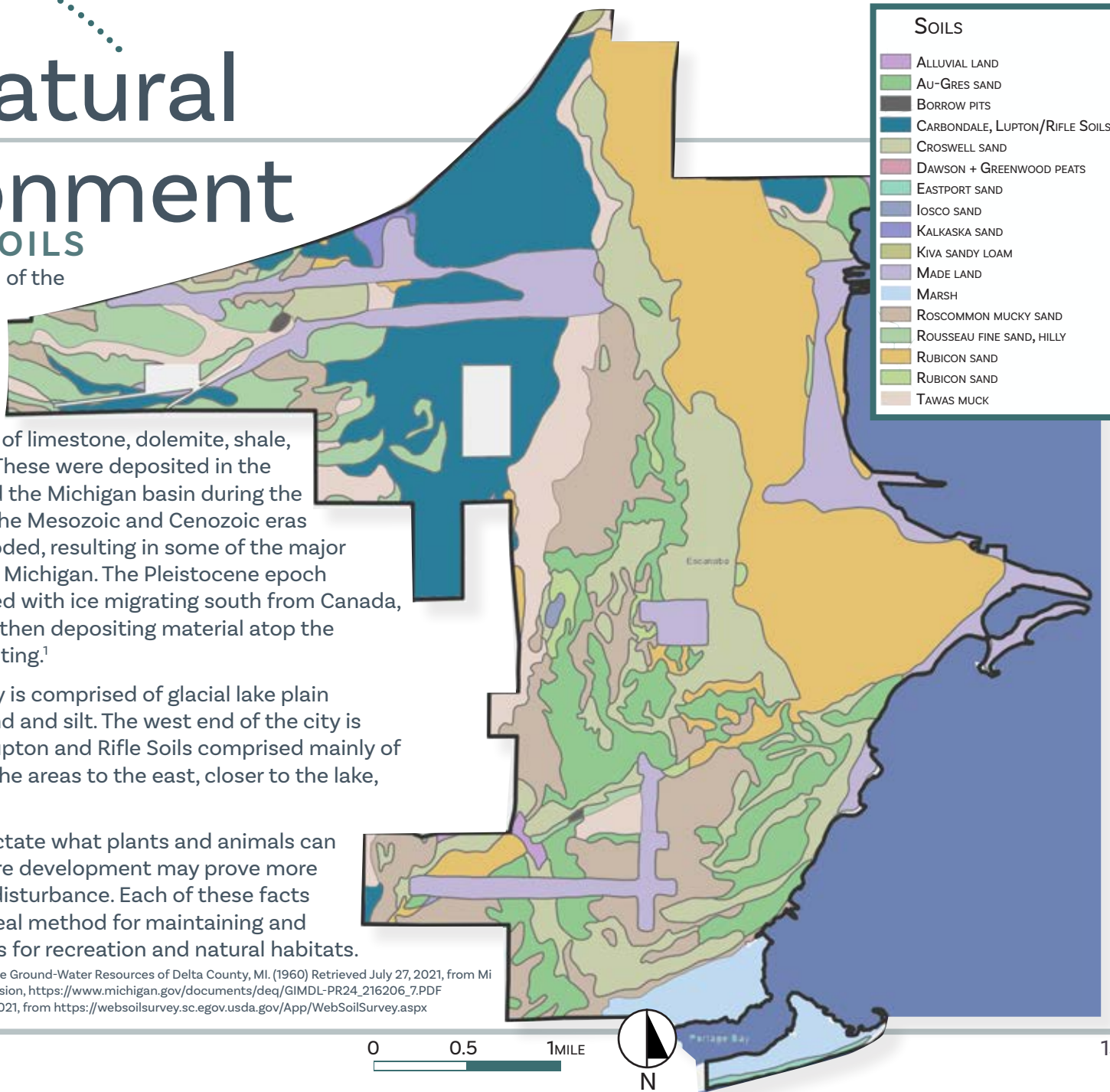
Geology is the foundation of the landscape, providing a template for future plant and animal habitat.

Paleozoic rocks underlie Delta County and consist of limestone, dolomite, shale, sandstone, and gypsum. These were deposited in the shallow seas that covered the Michigan basin during the Paleozoic period. During the Mesozoic and Cenozoic eras these sediments were eroded, resulting in some of the major physiographic features of Michigan. The Pleistocene epoch (glaciation period) followed with ice migrating south from Canada, abrading the surface and then depositing material atop the Paleozoic rocks when melting.¹

The City's surface geology is comprised of glacial lake plain consisting mainly of a sand and silt. The west end of the city is covered in Carbondale, Lupton and Rifle Soils comprised mainly of a very mucky peat while the areas to the east, closer to the lake, are much more sandy.²

Geology and soil types dictate what plants and animals can thrive in an area and where development may prove more feasible or generate less disturbance. Each of these facts provide clues as to the ideal method for maintaining and creating successful places for recreation and natural habitats.

¹ Progress Report #24 Reconnaissance of the Ground-Water Resources of Delta County, MI. (1960) Retrieved July 27, 2021, from Michigan Dept of Conservation Geological Survey Division, https://www.michigan.gov/documents/deq/GIMDL-PR24_216206_7.PDF
² USGS Web Soil Survey, Retrieved July 27, 2021, from <https://websoilsurvey.sc.egov.usda.gov/App/WebSoilSurvey.aspx>



The Natural Environment



LAKE SHORE



EMERGENT WETLAND



ASPEN + LOWLAND CONIFER FOREST



MAINTAINED TURF



URBAN CONIFER FOREST



WOODED WETLAND

The Natural Environment

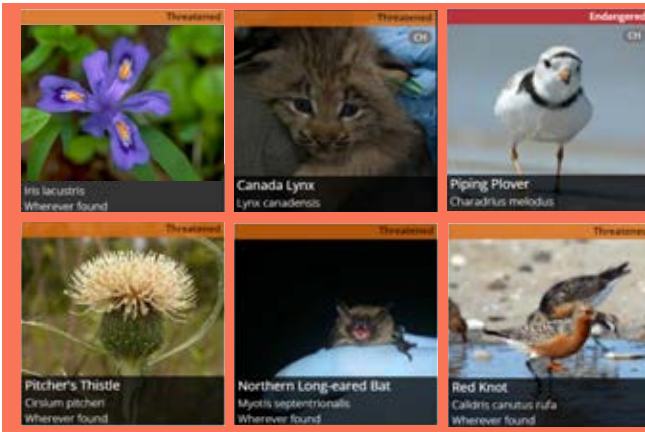
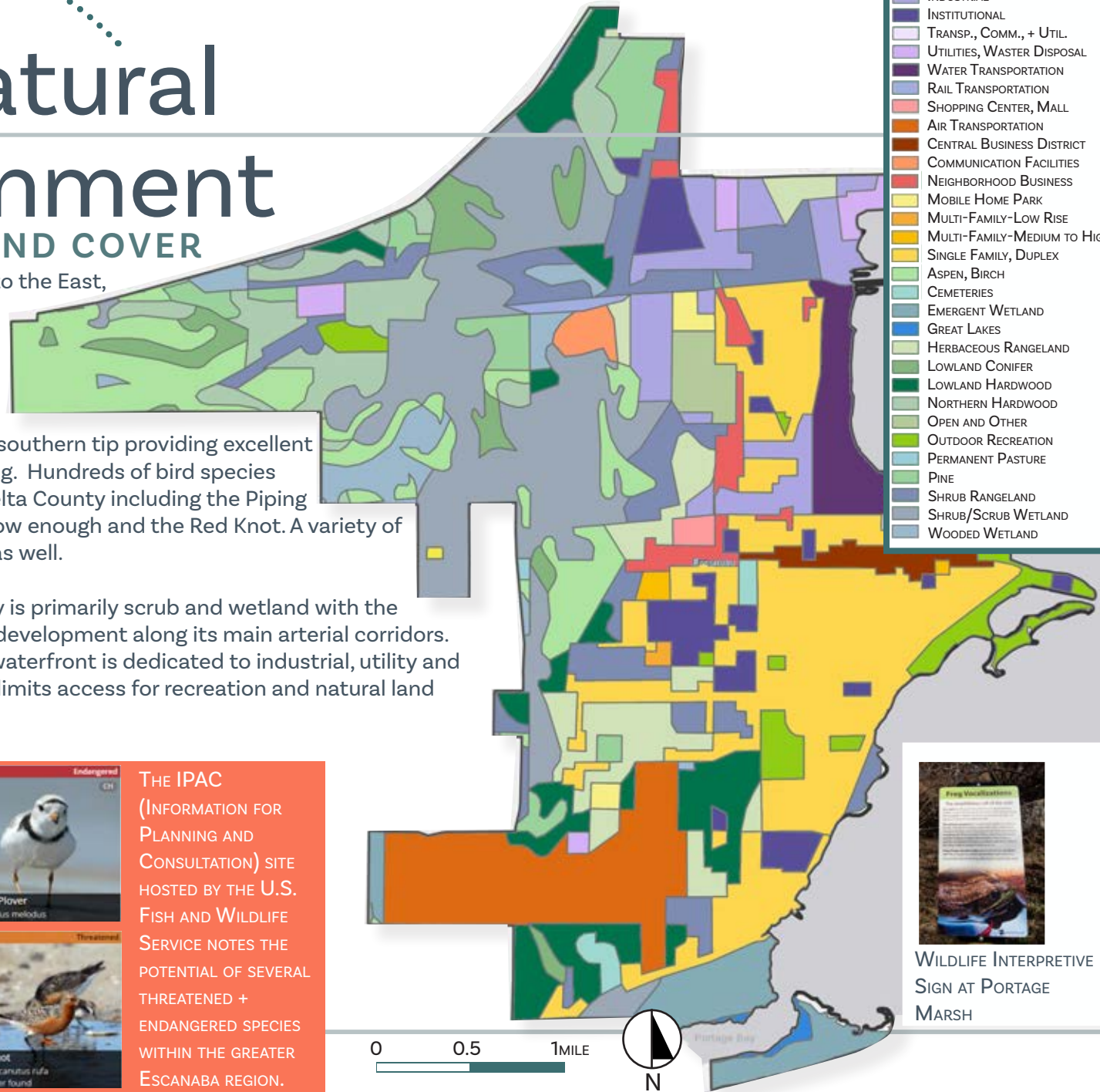
WILDLIFE + LAND COVER

Bordered by Lake Michigan to the East, Escanaba hosts a beautiful coastline that is home to an abundance of wildlife.

An expansive emergent wetland is located along its southern tip providing excellent opportunity for bird watching. Hundreds of bird species have been located within Delta County including the Piping Plover when lake levels are low enough and the Red Knot. A variety of amphibians are found here as well.

The western edge of the City is primarily scrub and wetland with the traditional urban palette of development along its main arterial corridors. The north end of the City's waterfront is dedicated to industrial, utility and water transportation which limits access for recreation and natural land cover typologies.

- LAND COVER**
- INDUSTRIAL
 - INSTITUTIONAL
 - TRANSP., COMM., + UTIL.
 - UTILITIES, WASTER DISPOSAL
 - WATER TRANSPORTATION
 - RAIL TRANSPORTATION
 - SHOPPING CENTER, MALL
 - AIR TRANSPORTATION
 - CENTRAL BUSINESS DISTRICT
 - COMMUNICATION FACILITIES
 - NEIGHBORHOOD BUSINESS
 - MOBILE HOME PARK
 - MULTI-FAMILY-LOW RISE
 - MULTI-FAMILY-MEDIUM TO HIGH
 - SINGLE FAMILY, DUPLEX
 - ASPEN, BIRCH
 - CEMETERIES
 - EMERGENT WETLAND
 - GREAT LAKES
 - HERBACEOUS RANGELAND
 - LOWLAND CONIFER
 - LOWLAND HARDWOOD
 - NORTHERN HARDWOOD
 - OPEN AND OTHER
 - OUTDOOR RECREATION
 - PERMANENT PASTURE
 - PINE
 - SHRUB RANGELAND
 - SHRUB/SCRUB WETLAND
 - WOODED WETLAND



THE IPAC (INFORMATION FOR PLANNING AND CONSULTATION) SITE HOSTED BY THE U.S. FISH AND WILDLIFE SERVICE NOTES THE POTENTIAL OF SEVERAL THREATENED + ENDANGERED SPECIES WITHIN THE GREATER ESCANABA REGION.



WILDLIFE INTERPRETIVE SIGN AT PORTAGE MARSH

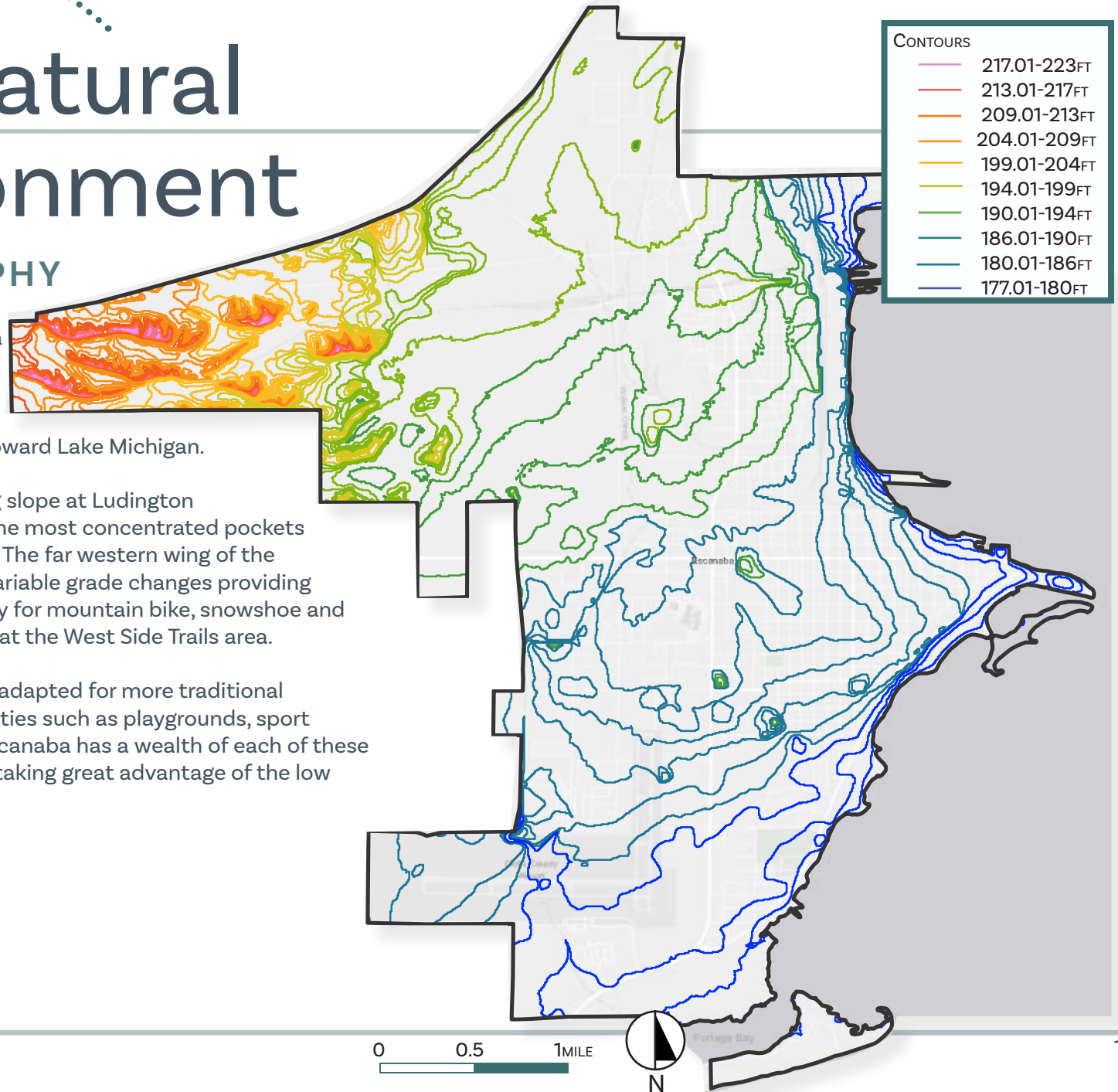
The Natural Environment

TOPOGRAPHY

The City of Escanaba has relatively little grade change. The gentle slope of the community drains toward Lake Michigan.

The popular sledding slope at Ludington Park utilizes one of the most concentrated pockets of elevation change. The far western wing of the City also has more variable grade changes providing excellent opportunity for mountain bike, snowshoe and ski trails as featured at the West Side Trails area.

Flatter sites are well adapted for more traditional recreation opportunities such as playgrounds, sport courts, and fields. Escanaba has a wealth of each of these recreation facilities, taking great advantage of the low slope terrain.



4 Administrative Structure

HISTORY OF THE RECREATION DEPARTMENT

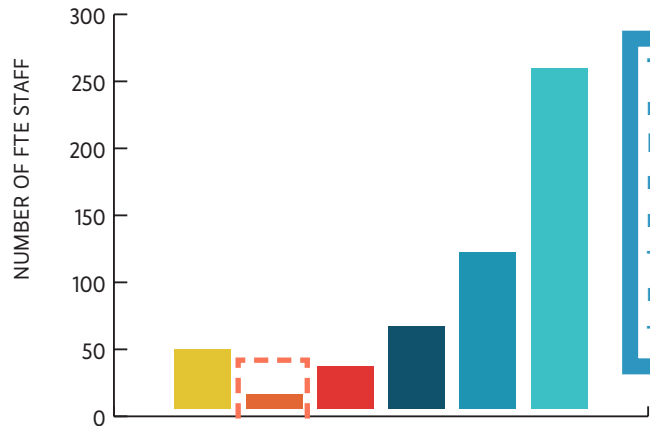
The Recreation Department within the City of Escanaba was created under the State Enabling Legislative Act No. 156b, Public Acts of the State of Michigan. The City Council adopted the resolution in 1937 and further reorganization adoptions in 1947, 1966, and 1977. Beginning in 1947, the Recreation Department hosted a part time director and 25 seasonal and full time employees from the Public Works Department to maintain buildings and recreation areas. The Recreation Department's director was bumped up to full-time employment status in 1977 and the position has remained full-time ever since.

ADMINISTRATIVE STRUCTURE

The Escanaba Recreation Advisory Board is a citizen advisory board providing advice and counsel to the Recreation Director. Members are appointed by the City Council for a term of three years, with a limit of two three-year terms. Composition of the board includes five appointed members and the Recreation Director who acts as a non-voting secretary.

The Board meets at least once a month and Activities of the Recreation Board include review and evaluation of all programs and activities under the Recreation Department. All input to the City Council from the Recreation Advisory Board is contingent upon the review and approval of the City Manager, and occasionally the City Council.

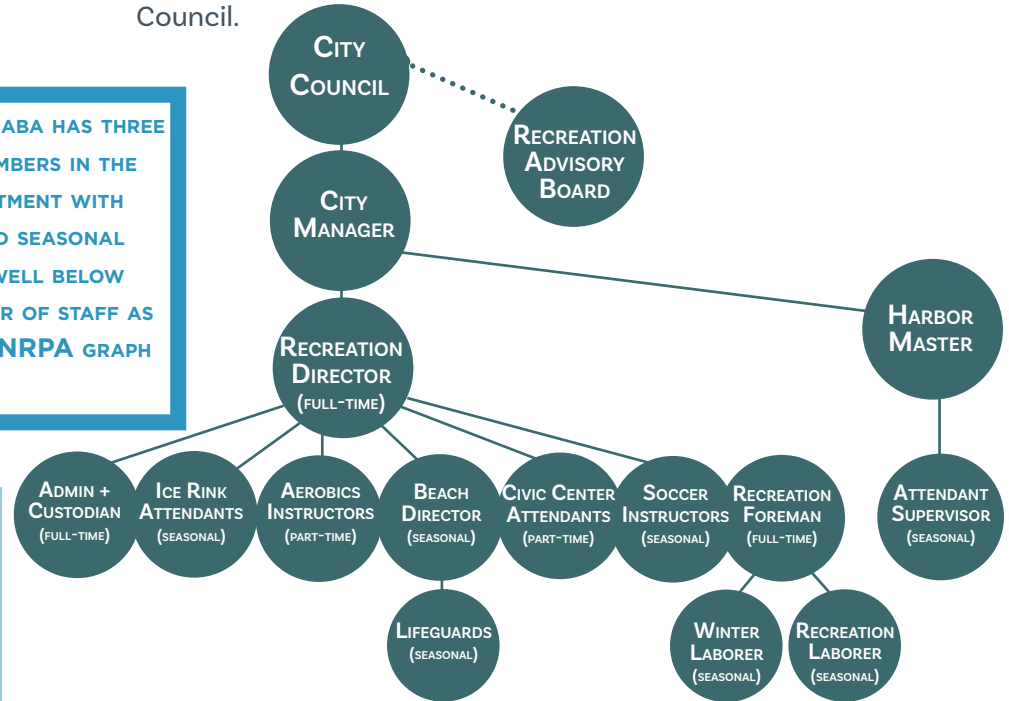
PARK AND RECREATION AGENCY STAFFING FULL-TIME EMPLOYEES



THE CITY OF ESCANABA HAS THREE FULL-TIME STAFF MEMBERS IN THE RECREATION DEPARTMENT WITH MANY PART-TIME AND SEASONAL POSITIONS. THIS IS WELL BELOW THE AVERAGE NUMBER OF STAFF AS ILLUSTRATED IN THE NRPA GRAPH TO THE LEFT.

NRPA

	All Agencies	Less than 20,000	20,000 to 49,999	50,000 to 99,999	100,000 to 250,000	More than 250,000
Median	44.3	10.9	31.4	61.2	117	254.1
Lower Quartile	15.9	5.4	16.3	34.4	46	106
Upper Quartile	126.9	21.5	59.8	114.6	202.2	550



CITY OF ESCANABA RECREATION DEPARTMENT | STAFF FLOW CHART

Budget + Maintenance

VOLUNTEER + COMMUNITY GROUPS

The City of Escanaba has working relationships with the local school district, area YMCA, Bayside Soccer, Little League Baseball, American Legion Baseball, and the Escanaba Fan Club. The City cooperates with the Escanaba High School tennis and baseball teams for use of the City's facilities. Cross-country activities take place in Ludington Park. Girls' softball games are held on three fields that are owned by the school district.

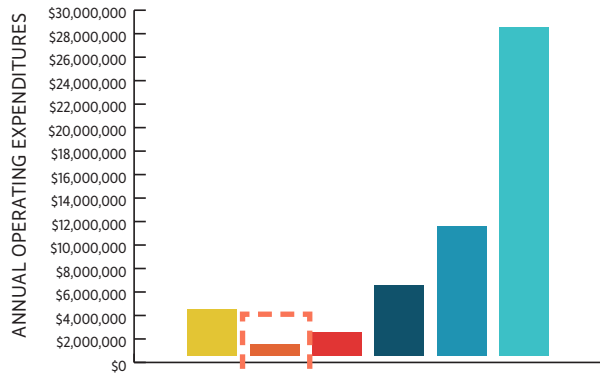
The City actively seeks volunteers and has volunteer sign-up available in the Civic Center. When needed, the City will contact volunteers for a variety of recreation projects. The community takes great pride in the involvement of private citizens, businesses and groups that donate their time and resources.

RECREATION + MAINTENANCE BUDGET

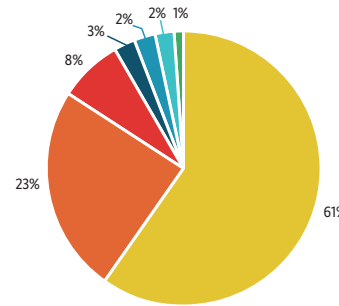
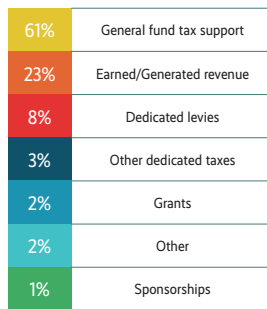
The City of Escanaba draws its annual operational support to maintain its park and recreation facilities from the City's general fund, related fees, and occasional grant funds and donations. The City's *User Fee Policy* provides roughly 10% of the funds for the parks and recreation budget. The Municipal Marina currently uses the special revenue accounting system separating these activities from the general fund. The Marina and related boating activities generate revenues that offset most of the expenditures.

The annual budget is formulated by the Recreation Director, Harbor Master, and Superintendent of Public Works. The City Manager reviews the budget requests and the City Council approves appropriations annually. At the time of drafting this plan, the projected annual budget will remain similar to the 2020-2021 season budget.

ANNUAL OPERATING EXPENDITURES BY JURISDICTION POPULATION



SOURCES OF OPERATING EXPENDITURES



IN COMPARISON WITH THE NRPA JURISDICTION POPULATION GRAPH OF OPERATING EXPENDITURES, THE ESCANABA'S PARKS + RECREATION BUDGET APPEARS TO BE QUITE ROBUST. THE ESCANABA FIGURES ARE SLIGHTLY MISLEADING AS ROUGHLY \$500K OF THE BUDGET IS DEDICATED TO MARINA SPENDING LEAVING CLOSER TO \$800K AVAILABLE FOR PARKS + RECREATION SPENDING.

NRPA

	All Agencies	Less than 20,000	20,000 to 49,999	50,000 to 99,999	100,000 to 250,000	More than 250,000
Median	\$4,898,633	\$1,209,393	\$3,234,982	\$7,150,817	\$11,862,458	\$28,564,326
Lower Quartile	\$1,863,016	\$545,821	\$1,879,595	\$3,900,154	\$5,762,630	\$13,419,026
Upper Quartile	\$13,839,293	\$2,193,932	\$6,553,308	\$11,149,210	\$22,066,712	\$52,700,000

CITY OF ESCANABA FY 2021-2021 BUDGET

Facility/Activity	Amount Budgeted
GENERAL FUND	
Civic Center – Operations & Maintenance	\$63,904
Civic Center - Activities	\$47,534
July 4 th – Activities & Fireworks	\$18,852
Community Service – Special Events	\$16,148
Administration	\$152,469
Summer Sports – Activities & Facility Maintenance	\$166,906
Wading Pool	\$12,121
Winter Sports – Facility Maintenance	\$58,665
Municipal Beach – Operations & Maintenance	\$23,789
Park Maintenance	\$201,306
MARINA FUND	
Marina & Boating Activities	\$239,998
SUBTOTAL – MARINA FUND	\$266,665
TOTAL PARKS, RECREATION, MARINE & CAPITAL	=\$1,268,357

5 Recreation Inventory

STANDARDS FOR RECREATION OPEN SPACE

The National Recreation and Park Association (NRPA) has developed a scale to help measure an existing recreation system’s park facilities and provide a baseline standard for equitable park access within a community.

A typical park and recreation system offers one park for every 2,277 residents served, with 9.9 acres of parkland per 1,000 residents. Due to its lower density population Michigan’s Upper Peninsula trends toward having a much greater number of parks per 2,277 residents. Here is a chart illustrating the different open space typologies defined by NRPA and the desired minimum amount of park space per community.

The City of Escanaba has an abundance of recreational sites in relation to its rather small population. From quiet natural spaces to heavily trafficked sports complexes, these facilities offer a wide array of recreation opportunities.



The following pages feature each recreational site within the city including a short description of any amenities paired with activity icons.



Stars adjacent to park titles denote particular sites that would benefit from additional maintenance and general upgrades or contain great potential for enhancement projects.



PARK TYPE	SERVICE AREA (RADIUS)	SIZE (ACRES)	ACRES/1,000 POP	ESCANABA ACRES/ POP (x12.25)	USES
Mini-Park	<1/4mi	1 or less	0.25 to 0.5	1.25 to 2.5 Currently: 5.93	Specialized facility serving a concentrated or limited population
Neighborhood Park	1/4 to 1/2mi	15+	1 to 2	5 to 10 Currently: 18.08	Hosts intense recreation activities: Play, sports fields/courts, picnicking etc.
Community Park	1 to 2mi	25+	8 to 10	25 to 40 Currently: 3879	Diverse environmental quality; may include sports complexes or more natural forms of outdoor recreation
Regional Park	1 hr drive	200+	5 to 10	25 to 50	Area of natural quality for outdoor recreation; boating, swimming, camping, trail use etc.
School Park					Park associated with an educational institution

Recreation Inventory

PROGRAMMING

Recreation programming is as important to the City as its facilities. The City of Escanaba provides recreation programming for all facets of the City’s population regardless of economic status and ability level. The primary goal for municipal recreation programming within the City is to provide as many quality services as possible at the lowest possible cost to the user and taxpayer. Specifically, youth programs carry little to no fees with the General Fund covering much of the expense. The City does charge minor fees for some programs to help supplement the draw from the General Fund.

Citizen survey results indicated a very strong interest in community programming. Escanaba hosts a vast array of events working with many local organizations including the Bonifas Arts Center and the local library. Some of the existing events include: Rock the Dock, Marinafest, Waterfront Art Festival, Music Mondays, City Band Concerts, and Kruisin Klassics. The City should continue

to support efforts to integrate future opportunities into the fabric of the community.

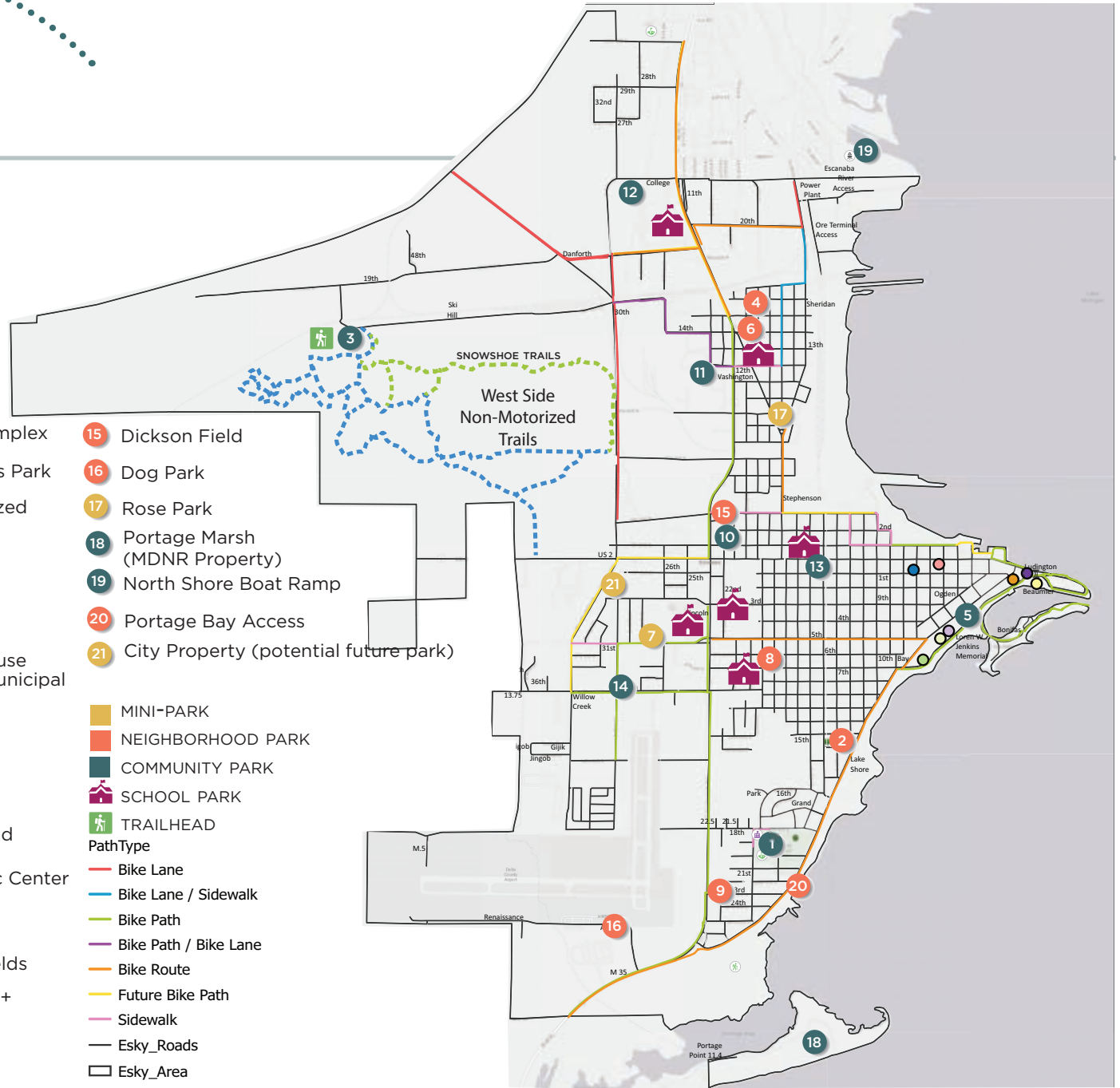


KRUISIN KLASSICS

RECREATION PROGRAMS	SEASONS AVAILABLE	PROGRAM SPONSORS
SENIOR CITIZEN PROGRAMS	ALL YEAR	CITY/CAA
ADULT ARCHERY/PISTOL RANGE	ALL YEAR	CITY/CLUBS
ICE SKATING: OPEN + LESSONS	WINTER	WELLS/CITY
YOUTH SKATING: HOCKEY + FIGURE	FALL/WINTER	WELLS/CLUB/CITY
SCHOOL RECREATION PROGRAMS	SPRING/FALL/WINTER	SCHOOLS
YMCA ACTIVITY/SPECIAL OLYMPICS	ALL YEAR	YMCA
GIRL’S SOFTBALL: MINOR-BIG LEAGUE	SPRING/SUMMER	SCHOOLS/LEAGUES
BOY’S BASEBALL: LITTLE-BIG LEAGUE; AMER. LEGION + SENIOR	SPRING/SUMMER	CITY/SCHOOLS/LEAGUES
SLIP HOLDERS/VISITING VESSELS/BOAT LAUNCH	SPRING/SUMMER/FALL	CITY
LINE DANCING	ALL YEAR	CITY/CAA
CIVIC CENTER	ALL YEAR	CITY
ADULT BASEBALL	SUMMER	LEAGUE
MEN’S BASKETBALL	ALL YEAR	CITY
WOMEN’S VOLLEYBALL	ALL YEAR	CITY
JUNIOR + SENIOR HIGH TEEN CENTERS	SPRING/FALL WINTER	CITY
4-12TH GRADE RECREATION	SPRING/FALL/WINTER	CITY
TENNIS TOURNAMENTS	SPRING/SUMMER/FALL	CITY/OTHER/HIGH SCHOOL
ADULT/YOUTH TENNIS: LESSONS + LEAGUE	SPRING/SUMMER/FALL	PRIVATE
ADULT FITNESS PROGRAMS	ALL YEAR	CITY/OTHERS
SWIM LESSONS, BEACH + GENERAL SWIMMING	SUMMER (GENERAL ALL YEAR)	CITY (YMCA GENERAL)
OUTDOOR SOCCER	SPRING/SUMMER/FALL	CITY/BAYSIDE SOCCER



- | | |
|---|--|
| 1 Al Ness+Lemerand Complex | 15 Dickson Field |
| 2 Tapani Field + Veteran's Park | 16 Dog Park |
| 3 West Side Non-motorized Trails | 17 Rose Park |
| 4 Stephenson Park | 18 Portage Marsh (MDNR Property) |
| 5 Ludington Park
Karas Band Shell
Harbor Hideout
Gazebo
Sand Point Lighthouse
Aronson Island + Municipal Beach | 19 North Shore Boat Ramp |
| 6 Webster Park | 20 Portage Bay Access |
| 7 Westside Playground | 21 City Property (potential future park) |
| 8 Royce Park | |
| 9 Sylvan Point Playground | |
| 10 Catherine Bonifas Civic Center | |
| 11 U.P. State Fairgrounds | |
| 12 Bay College Soccer Fields | |
| 13 Escanaba Marketplace + Playground | |
| 14 Besse Park | |
-
- | |
|-------------------|
| MINI-PARK |
| NEIGHBORHOOD PARK |
| COMMUNITY PARK |
| SCHOOL PARK |
| TRAILHEAD |
-
- | |
|-----------------------|
| PathType |
| Bike Lane |
| Bike Lane / Sidewalk |
| Bike Path |
| Bike Path / Bike Lane |
| Bike Route |
| Future Bike Path |
| Sidewalk |
| Esky_Roads |
| Esky_Area |



Recreation Inventory

ACCESSIBILITY RECOMMENDATIONS

Accessibility assessments as well as the recreation inventory were completed on April 13th, 2021 as Julia Cogger toured each site. Additional visits were completed to verify initial observations. The 2010 ADA Standards for Accessible Design were referenced frequently when analyzing each of the recreation sites.

Several system wide concerns were observed. Most parks are primarily surfaced with maintained turf which is not an accessible surface when using a mobility device. Many of the smaller parks only have street parking without any accessible route from the vehicle to the park. Several paved pathways and sidewalks within the parks dead end at curbs or grassy areas providing no clear accessible route.

SYSTEM WIDE RECOMMENDATIONS:

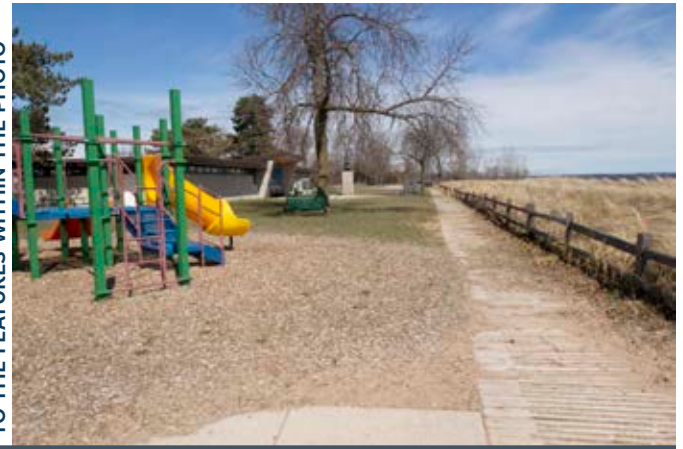
- Identify key functional areas within each park and determine best means for connecting these spaces with accessible routes
- Clearly identify each recreational area with cohesive signage and provide uncomplicated circulation throughout
- Note restroom placement (both permanent and portable) and identify an accessible route
- Note parking locations and access to the parks from the parking spaces, determine whether additional measures could be taken to provide easier access for those with mobility issues
- Ensure routes and facilities that were once deemed accessible are maintained to provide continued ease of access

The chart on page 25 features accessibility ratings for each of the recreation sites within the City. A more detailed analysis of each park is included in Appendix C.



















The Michigan DNR Rating Chart is as Follows:

- 1 | NONE OF THE FACILITIES MEET ACCESSIBILITY GUIDELINES
- 2 | SOME OF THE FACILITIES MEET ACCESSIBILITY GUIDELINES
- 3 | MOST OF THE FACILITIES MEET ACCESSIBILITY GUIDELINES
- 4 | THE ENTIRE PARK AREAS MEET ACCESSIBILITY GUIDELINES
- 5 | THE ENTIRE PARK WAS DEVELOPED USING UNIVERSAL DESIGN PRINCIPLES

POTENTIALLY ONCE DEEMED ACCESSIBLE, BOARDWALK MAINTENANCE IS CLEARLY NEEDED, AS WELL AS ACCESS TO THE FEATURES WITHIN THE PHOTO



RECREATION ACTIVITY KEY (FEATURED BY PARK ON PAGE 25)

 Boat Ramp	 Fishing	 Biking	 Hockey	 Cross-Country Skiing	 Sightseeing + Wildlife Viewing
 Playground	 Swimming	 Ball Sports	 Hiking	 Snowshoeing	 Camping
 Picnic Area	 Paddling	 Sledding	 Mountain Biking	 Arts + Culture	 Disk Golf

Recreation Inventory

PARK/FACILITY	ADA RATING	ACTIVITY
AL NESS + LEMERAND COMPLEX	2	
TAPANI FIELD + VETERAN'S PARK	1	
WEST-SIDE TRAILS	1	
STEPHENSON PARK	1	
LUDINGTON PARK	3	
WEBSTER PARK	3	
WEST-SIDE PLAYGROUND	1	
ROYCE PARK	2	
SYLVAN POINT PLAYGROUND	1	
CATHERINE BONIFAS CIVIC CENTER	4	
U.P. STATE FAIRGROUNDS	n/a	
BAY COLLEGE SOCCER FIELDS	4	
ESCANABA MARKETPLACE	4	
BESSE PARK	5	
DICKSON FIELD	1	
DOG PARK	1	
ROSE PARK	1	
PORTAGE MARSH (MDNR)	n/a	
NORTH SHORE BOAT RAMP	4	
PORTAGE BAY ACCESS	1	
FUTURE PARK	n/a	

Recreation Inventory



*
*
1
4.7 acres
+
5.0 acres

AL NESS + LEMERAND COMPLEX



This **community park** is along Lake Shore Drive just south of 18th Ave. S. Al Ness is maintained by the City while the Lemerand Complex is maintained by Escanaba Public Schools. The combined area is roughly 10 acres and features 4 baseball fields. The City hosts many amenities at this park including a playground, pavilion/concession stand and restrooms.



★
2
2.1 acres

TAPANI FIELD + VETERAN'S PARK



This **neighborhood park** hosts a baseball field, playground, tennis courts, half a basketball court, parking, coastal marsh, water fountain, horseshoe court, benches and a stand of large white pine. It's located on Lake Shore Drive and 12th Ave. South.



The park name is from the World War II Quonset housing once located here. Clues of this history include the old concrete sidewalks.



Recreation Inventory



3 WEST-SIDE NON MOTORIZED TRAILS

This **community park** features 6.6 miles of trail with 3000 new developments underway. 2000 linear feet of **acres** boardwalk was recently installed to provide year round access for skiers, snowshoers, bikers, dog walkers, bird watchers and hikers. A new trail head was added with several other developments planned for the future. Volunteer groups have been instrumental in applying for and obtaining funds and donating labor and time.



4 STEPHENSON PARK

2.6 acres



This **neighborhood park** is 2.6 acres and located at North 19th Street and 15th Avenue North. It features a small playground with swings in need of upgrades. There is also a basketball court, baseball field and water fountain. An old concrete block pump house, formerly an eyesore has been painted by Bonifas Arts Center community artists adding a colorful and playful touch to this otherwise worn out play area. The mural was funded by a Prosperus Places Grant from the Regional Prosperity Initiative in 2020.



Recreation Inventory



5
120 acres

LUDINGTON PARK



This community park is the heart of the Escanaba. 120 acres nestled along the banks of Lake Michigan, Ludington features every small city amenity imaginable from picturesque views to a band shell, fountain, lighthouse, marina, playground, pavilion, restrooms, bike/walking trails, interpretive exhibit, sport courts, sledding hill, and museum. Races, concerts, movie nights, and community events are all hosted here. Despite constant maintenance provided by public works staff the park is in need of several upgrades and enhancements as noted in the majority of community survey responses.



Recreation Inventory



LUDINGTON PARK CONTINUED: ARONSON ISLAND+MUNICIPAL BEACH

This facet of the park is the City of Escanaba’s water play destination. It features a beach and swim area with lifeguards, bath house, outdoor rinse area, parking, kayak launch, accessible picnic tables, playground, sand volleyball court, and benches. Summer swim lessons are also hosted here.

Many community surveys featured requests improvements be made to the beach area and accompanying restroom facilities. An improved launch site serving kayakers, paddle boarders and canoers was also frequently mentioned.



Recreation Inventory

6

WEBSTER PARK

This **neighborhood park** used to host a lighted skating rink with sound system, free skate rentals, and warming shelter. The rink was relocated to an area adjacent to the Catherine Bonifas Civic Center in the winter of 2018.

1.6 acres

The Webster wading pool was closed for the 2020 summer season and again for the 2021 summer due to Covid restrictions and not enough lifeguards to staff the pool. The City plans to remove the pool and install a new splash park at this site.



7

WEST-SIDE PLAYGROUND

0.5 acres

This **mini-park** features a few outdated play components with a small picnic area. It is adjacent to a series of housing units and the Escanaba High School. With some minor play structure upgrades, this site could receive a new life as one of few play spaces on the West side of Escanaba.



8

ROYCE PARK

3.1 acres

This **neighborhood park** is 3.1 acres and located at South 19th Street and 7th Avenue South. The ice rink was moved to the Civic Center in 2018.

A variety of sport courts and baseball/softball field are located here as well as restrooms, seasonal concessions, a playground, water fountain, and benches.



Recreation Inventory



9 SYLVAN POINT PLAYGROUND



This neighborhood park hosts a small assortment of 0.43 playground components. A chain link fence surrounds the periphery. Some updates to the current play structures would be well received.



10 CATHERINE BONIFAS CIVIC CENTER



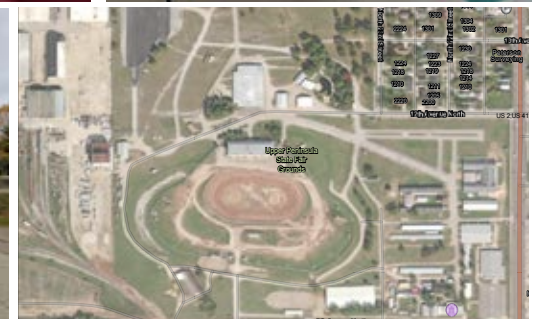
This community recreation facility is open year round. It hosts a game room, indoor sport courts, meeting spaces and special programming. There is a robust after school program for kids between 4th-12th grades. Adults can play basketball, volleyball, pickle-ball and utilize the lockers, showers and game room. There is an ice rink in the winter with free skate rentals. The city's Recreation Director is based out of this facility. The facility does require some maintenance upgrades.



11 U.P. STATE FAIRGROUNDS



This community park features the traditional expanse of paved parking areas with facilities required to host the annual fair. A small DNR pocket park is also located within the fairgrounds. It is in need of electrical upgrades.



Recreation Inventory



12
4.7 acres

BAY COLLEGE SOCCER FIELDS



This **community park** is owned by the Bay de Noc Community College and leased and maintained by the City of Escanaba. It includes two full size soccer fields and four junior sized fields. The fields are irrigated and have professional style goals. A walking loop surrounds the periphery with a labyrinth nestled on the side. A concession stand/pavilion and parking area are also located here.



13
0.4 acres

ESCANABA MARKETPLACE



This **community park** is located at 1501 Ludington Street. It is a new addition to the City's main street and features a large pavilion with a kitchen and playground partially funded with a Michigan DNR Recreation Passport Grant. The City's farmer's market and other volunteer events are hosted here.

Vandalism is an issue with signs featuring security cameras, no loitering and no trespassing found throughout. The existing fence was recently replaced with a new chain link fence.



Recreation Inventory



14 BESSE PARK

1.1 acres

This **neighborhood park** features accessible facilities with poured in place rubber surfacing at the new play structure and concrete walks throughout. A large picnic pavilion, water fountains and grills are available. The site includes a parking lot, volley ball court, 9 basket disk golf course, and tether ball.



15 DICKSON FIELD

5.5 acres

This **neighborhood park** is adjacent to the Catherine Bonifas Civic Center. It is a fenced in baseball field with all associated amenities including: irrigation, dug outs, press box, concession, bleachers, water fountain, and an electronic scoreboard.



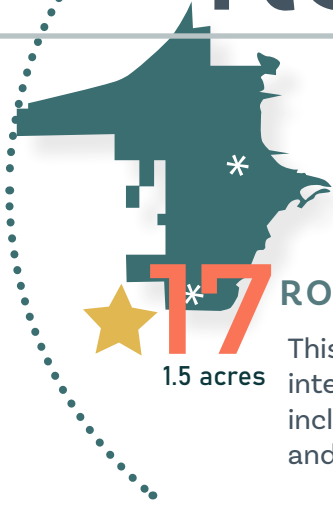
16 DOG PARK

1.0 acre

This **community park** proves a popular destination for dog owners. It is 1.72 acres with separate fenced areas for small and large dogs and was installed by community volunteers.



Recreation Inventory



17 ROSE PARK
1.5 acres



This neighborhood park is 1.5 acres located at the intersection of Washington and Stephenson Avenues. It includes a tennis court, playground, old water fountain, and picnic tables. It would benefit from several upgrades.



18 PORTAGE POINT MARSH
MDNR MANAGED
600 acres



This community park is just south of the city on a spit of land that juts out into Lake Michigan. It is state wildlife management area owned and managed by the Michigan DNR and has seen many beautiful recent upgrades including accessible boardwalks, a parking lot, and interpretive signage. This park is a well kept secret, a true gem. The 600 acre coastal marsh serves as a birdwatcher's paradise as many rare birds breed here. Depending on water levels and access, the array of birds spotted can vary from the Willow Flycatcher, Marsh Wren, American and Least Bittern, Sora and Virginia Rails to the Hudsonian and Marbled Godwit, Willet, and Long-billed Dowitcher. Habitat includes open water, cattail marsh, wet meadow, shrub thickets, sand beach, and inter-dunal pools.



Recreation Inventory



10 acres



NORTH SHORE BOAT LAUNCH

This **community park** hosts a vast parking area with multiple boat ramps, a fishing pier, fish cleaning station and restrooms. Abandoned train cars flank the west side of the parking area proving a potentially interesting backdrop for an interpretive exhibit. The site could use a lighting upgrade.



20 PORTAGE BAY ACCESS



This **neighborhood park** provides access to the Portage 0.65 Point marsh affording bird watchers and walkers access to this expansive resource as well as beach goers and others who simply wish to spend some time on Lake Michigan's shoreline.

21 FUTURE PARK

This **parcel** is located between 1st and 3rd South Avenues along Willow Creek and is owned by the City. There is potential to create a pump track or develop it into a small park for residents on the west end of the City to enjoy.

6 Comments + Issue Scoping

IN THE LAST YEAR, WHAT RECREATIONAL ACTIVITIES HAVE YOU OR A MEMBER OF YOUR HOUSEHOLD PARTICIPATED IN?



ACTIVITIES SURVEY RESPONDENTS MOST FREQUENTLY PARTOOK IN THE LARGER THE FONT THE MORE RESPONDENTS WHO LISTED THE ACTIVITY.

Community Input

WHAT DO YOU THINK OF WHEN SOMEONE MENTIONS RECREATION IN ESCANABA?



Community Input

6 WHAT DO YOU VALUE ABOUT ESCANABA'S RECREATION OPPORTUNITIES?

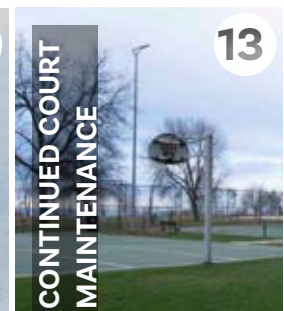
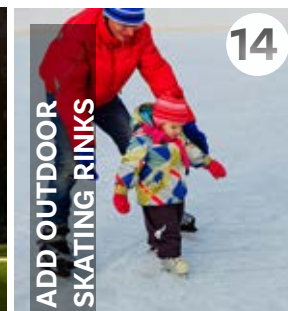
all season sports courts/fields
Ludington
Variety+
inclusive Access Clean
Lakeshore
Family Friendly Art+History Space trees
trails music+events Scenery
harbor+marina Safe Potential community bonding nothing
Free Disk Golf Fishing

RECREATION VALUES

- WE VALUE LAKE MICHIGAN + ITS SPECTACULAR SCENERY
- WE VALUE THE EASE OF ACCESS AND VARIETY OF RECREATION OPPORTUNITIES
- WE VALUE HAVING FREE + INCLUSIVE RECREATION OPTIONS
- WE VALUE HAVING CLEAN PLACES TO PLAY IN ALL YEAR ROUND

Community Input

8 WHAT WOULD YOU LIKE TO CHANGE ABOUT ESCANABA'S RECREATION OPPORTUNITIES?



Community Input

12 IMPROVE KAYAK LAUNCH

12 CLEAN UP TRASH + GOOSE POOP

11 ADD PICKLEBALL COURTS

11 ENCOURAGE TOURISM VIA COMMUNITY EVENTS

10 NO SEWAGE DUMPING AT WESTSIDE TRAILS

9 INTERPRETATION AT ARONSON ISLAND

9 ADD PROGRAMMING OUTDOOR ED, REENACTMENTS, + ART IN THE PARK

9 INDOOR WINTER RECREATION

6 ENCOURAGE MORE LOCAL FARMERS AT THE MARKET

7 ADD A SKATE, BMX, OR PUMP TRACK

8 ACTIVATE THE MARINA

Community Input



MORE ORV + SNOWMOBILE TRAILS



BEGINNER X-SKI TRAIL



PROVIDE SENIOR SPACES



RENTALS AT LUDINGTON/ARONSON ISLAND



ADD BOARDWALK ALONG THE SHORELINE



ADDITIONAL WINTER ACTIVITIES FOR TEENAGERS AND PRESCHOOLERS



PROVIDE AWATERFRONT CAMPGROUND



SHOWCASE HISTORIC NEIGHBORHOODS AND RENEW TRIANGLE PARKS



PLANT MORE TREES



NO MORE CURFEW + ADD ALCOHOL IN PARKS



IMPROVE MTN BIKE TRAIL SAFETY

MOUNTAIN BIKING SAFETY TIPS
Tips That Will Improve Your Biking Safety



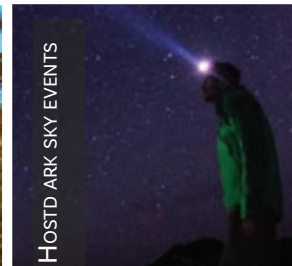
SAFE ICE FISHING OPTIONS



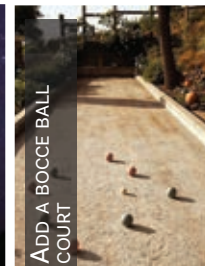
MORE DOG FRIENDLY PARKS



UPGRADE DISK GOLF COURSE



HOST DARK SKY EVENTS



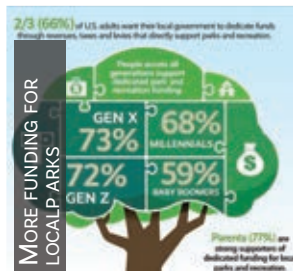
ADD A BOCCIE BALL COURT



ADD MORE CO-ED LEAGUES



IMPROVE VOLLEYBALL COURTS



ADD BOARDWALK ALONG THE SHORELINE

Community Input

PUBLIC WORKSHOP

The City of Escanaba and CUPPAD teamed up to host an interactive workshop on Ludington Street Labor Day Weekend. The goal was to gather as much public feedback on the proposed project list and community concepts as possible. Display boards featuring project images from public survey suggestions and a giant map of the community were mounted in a walk through exhibit. The community was invited to add a sticker noting their preferred projects and a post it with any additional suggestions.

Despite rainy weather, there was a steady stream of visitors nearing 100 people over the course of the Saturday event. All were very engaged. Pages 43 and 44 feature comments and sticker votes received.

All Public input was thoroughly integrated into the plan. The community survey responses directly informed the recreation values and goals defined within the plan. The changes proposed in the surveys also informed the project priorities for the community. Once this

information was processed the pop up event on Ludington Street served as another avenue for proofing and prioritizing the project list that was generated.

Roughly 16 avid pickleball players and advocates came to the September 14th, 2021 Recreation Advisory Board Meeting to express their strong desire to have dedicated pickleball courts. A tennis advocate also commented on the need to retain existing tennis courts for the dedicated tennis community as well.

The City of Escanaba assembled a stakeholder team to gather additional feedback. 20 local leaders and recreation representatives were invited to sit down and discuss the recreation plan and priorities. These meetings were hosted on August 8th and September 14th and were attended by 10-12 participants with additional email input from those who could not attend (see Public Input Appendix). The feedback received was reflected in the plan looking at items such as prioritizing park boundary mapping, adding electric bike rental stations, and kayak rentals.

The draft recreation plan was then printed and stationed at the Civic Center, City Hall, and the library. It was also posted on the home page of the City's website. A 30 day public review period was advertised on October 8th. The public hearing was advertised on October 20th and held November, 9th. Details of these advertisements are included in the Public Input Appendix. Several letters were submitted in support of adding dedicated pickleball courts and eight members of the public came to express their support for pickleball courts and prioritizing marina improvements. As a result, a dedicated pickleball court project was added to the proposed action plan and the Pier 3 and Marina Improvements projects were bumped up to a level 2 priority. This input was well received by the Recreation Board.



Community Input

PUBLIC WORKSHOP RESPONSES

HIGH PRIORITY PROJECTS

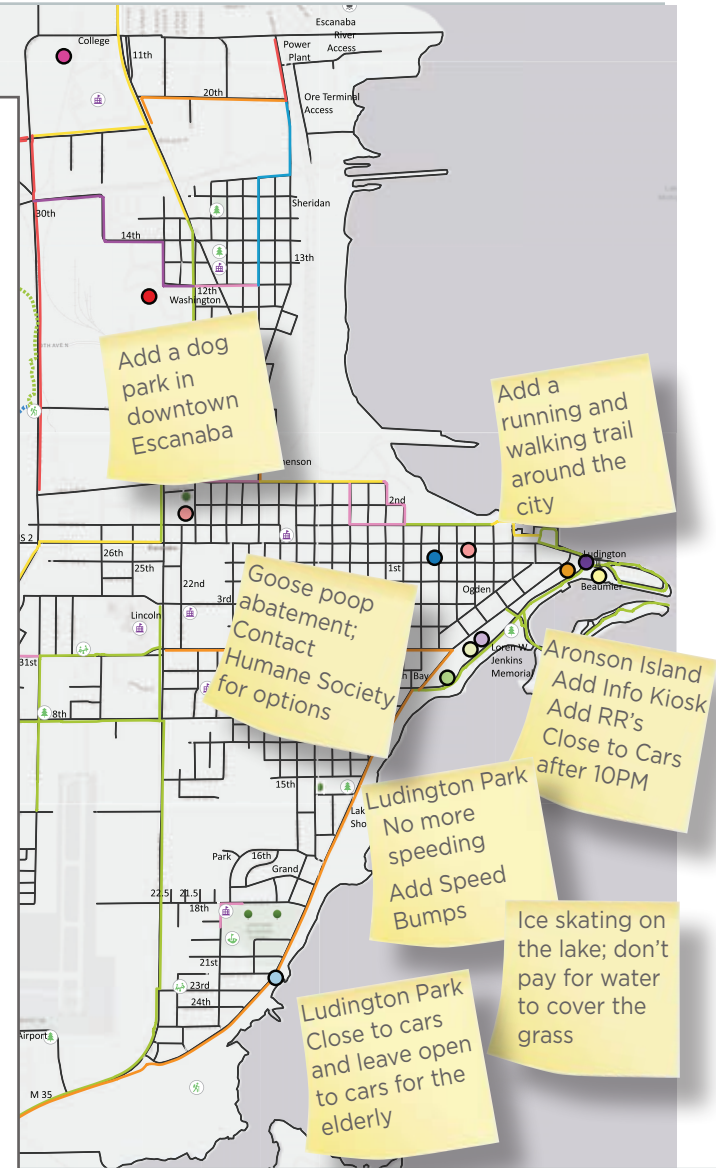
- Add soft surface trails
- Add a beach slide or splash pad
- More off road bike trails
- Open and clean up beach area
- Add more kid/family friendly activities
- Upgrade playgrounds
- Create accessible trails, play areas, etc.
- Add outdoor skating rinks
- Add indoor winter recreation
- Add a skate, bmx or pump track
- Activate the Marina
- Rentals at Aronson Island
- Add a boardwalk along the shoreline
- Host Community Events
- Make more dog friendly parks
- Host dark sky events

LOW PRIORITY PROJECTS

- Add pickleball courts
- More ORv/Snowmobile Trails
- Beginner x-ski Trail
- No more curfew and add alcohol at Ludington Park
- Add bocce ball courts

MIXED REVIEW PROJECTS

- Add food trucks and concessions
- More restrooms + Cleaning
- Upgrade Amenities
- Interpretation at Aronson Island
- Improve volleyball courts
- Promote senior spaces
- Additional outdoor winter activities
- Showcase historic North side neighborhoods and renew triangle parks
- Plant more trees
- Improve Mountain Bike Trail Safety
- Safe Ice Fishing Access
- Upgrade Disc Golf Course
- Add more Co-ed Leagues
- More Birding Options



Community Input

PUBLIC WORKSHOP RESPONSES

Escanaba Project List

- **NON-MOTORIZED PATHWAY IMPROVEMENTS:**
 1. PATH ON NORTH SIDE OF UP FAIRGROUNDS
 2. WILLOW CREEK ROAD BETWEEN 8TH AVENUE S. TO LUDINGTON STREET; THEN ALONG LUDINGTON TO N. LINCOLN ROAD
 3. 3RD AVENUE NORTH FROM NORTH 10TH STREET TO STEPHENSON AVE; DEDICATED SEPARATE BIKE PATH ON 3RD AVE
 4. NORTH 10TH STREET FROM 1ST AVENUE NORTH TO 3RD AVENUE NORTH
 5. STEPHENSON AVENUE TO SHERIDAN ROAD
 6. MUNICIPAL DOCK TO NORTH 4TH STREET
- TREE REPLACEMENT FOR CITY OWNED ASH TREES AND OTHER DEAD OR DYING TREES | PAIRED WITH URBAN FORESTRY PLAN
- WEST SIDE RECREATION AREA | ASSESS SKI TRAILS; EXPAND AND AVOID SWAMP
- CREATE WALKING TRAILS OUTSIDE OF THE WEST SIDE TRAIL AREA | EXAMPLE: TRAIL ALONG THE LAKESHORE IN LUDINGTON PARK
- ESCANABA MIGRATORY BIRD ENHANCEMENT INITIATIVE (EMBEI) | CONTINUE TO SUPPORT THIS PARTNERSHIP UTILIZING COMMUNITY SUPPORT TO ENHANCE BIRD HABITAT
- UPGRADE PLAYGROUND EQUIPMENT | LIST YOUR PRIORITY PARK!
- ARONSON ISLAND RESTROOMS | FIX UP THE PORT-A-JOHN AREA
- RESTROOM UPGRADE | MUNICIPAL DOCK
- RESURFACE COURTS | LIST YOUR PRIORITY PARK!
- INCLUSION OF ART + CULTURE ALONG WITH EVENTS | LIST YOUR IDEA!
EXISTING EVENTS/PROGRAMS: ROCK THE DOCK, MARINAFEST, WATERFRONT ART FESTIVAL, MUSIC MONDAYS, CITY BAND CONCERTS, CRUISIN CLASSIC, PUBLIC LIBRARY EVENTS, BONIFAS ART CENTER EVENTS, AND CATHERINE BONIFAS CIVIC CENTER EVENTS
- FISHING PIER/ENHANCEMENT OF FISHERIES | CREATION OF A LARGE FISHING PIER PAIRED WITH EFFORTS TO CLEAN UP AND IMPROVE LAKE HABITAT FOR FISH
- BOCCIE BALL | ADD A REGULATION SIZED COURT
- LIGHTING INVENTORY | CONSIDER LED OR SOLAR FIXTURES AND BAT/DARK SKY FRIENDLY
- VETERAN'S PARK DEVELOPMENT | WATERFRONT ACCESS, PLANTING AND PLAY UPGRADES

- TOP PRIORITY PROJECT
- MEDIUM PRIORITY PROJECT
- LOW PRIORITY PROJECT

- CATHERINE BONIFAS CIVIC CENTER | GENERAL MAINTENANCE UPGRADES
- MARINA IMPROVEMENTS | ADDITIONAL PARKING ALONG JENKINS DR. NEAR PIER III AND ADD 30' SLIPS, ADD WEB CAMERAS, AND RUSTIC CAMPSITES AT N. SHORE BOAT LAUNCH
- SPLASH PARK | AT WEBSTER WADING POOL
- KAYAK LAUNCH AT ARONSON ISLAND | ADA ACCESSIBLE
- PIER 3 RESTROOM FACILITY
- ADDITIONAL PAVILION AT LUDINGTON PARK (NEAR GAZEBO/MARINA AREA)
- LUDINGTON PARK PAVILION-ELECTRICAL UPGRADE
- DICKSON FIELD IMPROVEMENTS | PLUMBING UPGRADES
- NESS FIELD STADIUM | FIELD WITH 200 STADIUM SEATS; ADA ACCESSIBLE
- 3RD AVE. SOUTH POCKET PARK | (1ST AND 3RS AVE S AND S 30TH ST)
- LUDINGTON PARK RESTROOM REMODEL
- SKATE PARK, BMX OR PUMP TRACK

7 Goals + Objectives

DEFINING VALUES

Parks provide a connection between natural places and people, with the intent of encouraging meaningful outdoor experiences. There is an inherent tension between recreation and the preservation of natural resources. As illustrated in the community values below, access to natural resources is key to creating desirable recreation spaces. Water and vegetation are a common link featuring popular activities such as walking, biking, swimming, fishing, paddling and so much more. This plan attempts to define a balance between preserving and restoring natural places for future generations and providing recreation opportunities. Here is a summary of the recreation values derived from the community survey responses.

RECREATION VALUES

- WE VALUE LAKE MICHIGAN + ITS SPECTACULAR SCENERY
- WE VALUE THE EASE OF ACCESS + VARIETY OF RECREATION OPPORTUNITIES
- WE VALUE HAVING FREE + INCLUSIVE RECREATION OPTIONS
- WE VALUE HAVING CLEAN PLACES TO PLAY IN ALL YEAR ROUND

The 2016 Master Plan for the City of Escanaba features an overarching goal generated from community input. This goal references several aspects of park, natural space and recreation within the community, emphasizing how valuable these assets are to the community.

Here is the 2036 Community Goal for the City of Escanaba:

*In 2036 Escanaba will be an attractive community with a **vibrant and bustling downtown** that has a strong connection to the waterfront. The City will have well-maintained, **sustainable infrastructure** and a diverse economic base that affords residents with a high standard of living. The City will be **friendly to pedestrians and cyclists** and home to high-quality schools, **tree lined streets** and an accessible shoreline.*

Statewide Goals

STATEWIDE OUTDOOR RECREATION PLAN (SCORP) | 2018-2022

Michigan's Statewide Outdoor Recreation Plan (SCORP) serves as a backbone for recreation planning within the state. Every five years new surveys are administered, sites studied and outdoor recreation habits mapped. Through developing a clear understanding of how people recreate within Michigan we can help define how to provide additional access and amenities for those utilizing the parks within our communities.

The main OBJECTIVES outlined in the current SCORP plan:

- Foster stewardship and conservation
- Improve collaboration between stakeholders
- Raise awareness of outdoor recreation opportunities
- Improve recreational access for all
- Provide quality experiences
- Enhance health benefits
- Enhance prosperity via supporting economic prosperity, talent retention and high quality of life

RECREATION TRENDS

Nationally, many of the more traditional recreation activities, such as camping and fishing, have seen a slight decrease while nature based and backcountry activities are on the rise. Some of these trending activities include:

- Hiking
- Backpacking
- Kayaking
- Cross-country skiing
- BMX/Mountain biking
- Stand-up Paddling

Many passive recreation activities are also very popular, as noted in the SCORP surveys including relaxing, walking, picnicking, and unstructured play.

SCORP GOAL

Protect and manage Michigan's diverse and abundant natural and cultural assets to provide relevant, quality experiences that meet the fun, relaxation, and health needs of Michigan's residents and visitors and support economic prosperity.

-SCORP 2018-2022

Goals + Objectives

CITY OF ESCANABA RECREATION GOALS

Most people experience the outdoors on a daily basis. Even when the weather is well below zero. Walking to the car or bus and entering the grocery store, their place of work or school. Occasionally, a lunch break walk or recess affords additional time outdoors. The outside spaces for these types of experiences are often mundane possessing little more than basic characteristics.

When considering the actions that move people beyond the monotony of the daily commute to places for play, seeking solstice and exercise, these destinations must meet a higher bar. By establishing community VALUES a definition for successful recreation spaces begins to form. Massaging these into a series of community recreation goals and workable objectives serves as the next step in defining a vision for the community's recreation spaces.

The GOALS opposite and OBJECTIVES on the following pages forge a link between the information presented in the preceding chapters. They draw a connection between the balance of natural resources and recreation outlets, prioritize community values, and respond to existing park programming, opportunities, and conditions.

RECREATION GOALS

1. CONTINUE TO NURTURE COMMUNITY ENTHUSIASM AND THE RECREATION ASSETS THAT MAKE ESCANABA A TRULY SPECIAL PLACE.
(VALUE: CLEANLINESS + VARIETY)
2. PROVIDE IMPROVED ACCESS TO LAKE MICHIGAN WHILE PRESERVING THE NATURAL FEATURES THAT MAKE IT UNIQUE. (VALUE: LAKE MICHIGAN + EASE OF ACCESS)
3. SUPPORT EFFORTS TO KEEP PARKS SAFE, CLEAN, AND WELL MAINTAINED.
(VALUE: CLEANLINESS, ALL)

Goals + Objectives

1 Continue to nurture community enthusiasm and the recreation assets that make Escanaba a truly special place.

2 Provide improved access to Lake Michigan while preserving the natural features that make it unique.

STRATEGIES + OBJECTIVES

- Host community events and refine programming to accommodate all users
- Emphasize year round recreation opportunities including indoor community assets
- When park upgrade and enhancement projects do occur, pair them with community events and programming to ensure community members utilize the new facilities

STRATEGIES + OBJECTIVES

- Continue to support wildlife management and habitat restoration efforts
- Provide educational opportunities for the community to learn more about the great lakes and local ecosystems
- Complete priority projects to allow safe access to the waterfront including: kayak/canoe/paddle board launch, improved beach area, upgrade site amenities, provide adequate washroom facilities

VOLUNTEERS CONSTRUCTING BOARDWALKS AT WEST SIDE TRAILS



“A person’s conservation ethic begins with their connection to nature. If we compel people to engage in the natural environment through recreation, one cannot help but be overcome by the awesome responsibility to conserve, protect, and enhance our natural resources for future generations.”

-Dan Eichinger

Executive Director MI United Conservation Clubs

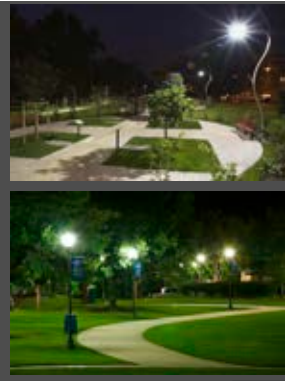
Goals + Objectives

3 Support efforts to keep parks safe, clean and well maintained.

STRATEGIES + OBJECTIVES

- Use high quality long lasting materials
- Follow recommended guidelines for safe site design
- Clearly denote public and private spaces
- Provide easy to interpret circulation and signage
- Keep 'eyes on the street' with connections between residential homes and public spaces; encourage community activities
- Provide well thought out lighting and community art to brighten up the parks
- Carefully locate seating and gathering spaces so they feel comfortable

Proper lighting | while taking measures to not disturb bats and dark skies



Eliminate Goose Poop | Some options could include: no feeding, less mowed turf, hired dog, etc.



Define park boundaries and beautify unfriendly spaces



STRATEGIES FOR PUBLIC SPACE

PUBLIC ART

- Public art creates perception of ownership
- Art can act as "eyes"
- Engages community artists
- Brightens energy in unanticipated spaces



Community Investment + Support | Host workshops + have volunteers assist with cleaning + beautification



8 Action Plan

This section features top priority parks + recreation projects chosen by the community and organized by the Recreation Advisory Board with input from the Recreation Plan Stakeholder Team.

PROPOSED PROJECTS

Priority (1 is highest priority and 3 is lowest priority)

1 Non-Motorized Pathway Improvements: Connecting gaps in the City’s non-motorized pathway system including:

1. Bike path on the north side of U.P. State Fairgrounds entrance going north to the corner of US2 and 41 and Danforth Road.
2. Willow Creek Road between 8th Avenue South to Ludington Street, then along Ludington Street to North Lincoln Road.
3. 3rd Avenue North from North 10th Street to Stephenson Ave; dedicated separate bike path on 3rd Ave
4. North 10th Street from 1st Avenue North to 3rd Avenue North (north side of 3rd Avenue North).
5. Stephenson Avenue to Sheridan Road
6. Municipal Dock to North 4th Street

Possible funding Source

Private Donation/ Foundation/ Grants/MDOT/ General Fund

1 Tree Replacement and Preservation for City owned Ash Trees and Other Dead or Dying Trees | Paired with Urban Forestry Plan: Many of the City’s trees are nearing the end of their natural lives and others are impacted by disease, invasive species, or the expansion of others (i.e. Dutch Elm Disease, Emerald Ash Borer, Asian Longhorned Beetles). The City should proactively develop an urban forestry plan to protect and maintain trees.

Private Donation/ Grants/MDOT/ General Fund

1 Upgrade Playground Equipment | Create a schedule of playgrounds in need of equipment updates and prioritize the list. Integrate universal design principals into the design of the new play amenities. Allow children of all ability levels to play and be challenged at their own developmental level.

Private Donation/ Grants/ General Fund

1 Splash Park | Install an inclusive splash park for kids and adults to have fun playing with water without the danger of being in deep water. This park could include fountains, slides, buckets and sprays. There would be no standing water which eliminates the need for lifeguards.

Private Donation/ Grants/ General Fund

1 Veteran’s Park Development | Create a comprehensive site plan for Veteran’s Park including the elements listed below: A boardwalk with elevated viewing platform and wooden igloo could be integrated into the waterfront. Add a paved path from Lake Shore Drive to 12th Ave. South meandering diagonally through the park and ending at the kid’s play area. Consider re-creating Veteran’s housing and integrating an interpretive element. Upgrade the playground and picnic area incorporating parking into the design as well.

Private Donation/ Grants/ General Fund

Action Plan

Priority (1 is highest priority and 3 is lowest priority)

Possible funding Source

Private Donation/
Foundation/
Grants/MDOT/
General Fund

1 Resurface Courts | Follow a regular schedule resurfacing one to two courts a year. When courts are resurfaced they will be reviewed as to their potential to host multi use courts or to include pickleball and tennis. Court life lasts between 5-7 years.

Rose Park Tennis Court- Resealed 2016-2017 fiscal year

Royce Park Tennis Court- Resealed 2012-2013 fiscal year

Royce Park Basketball Court- Resealed 2008-2009 fiscal year

Stephenson Basketball Court- Resealed 2016-2017 fiscal year

Veteran's Park Tennis Court- Resealed 2015-2016 fiscal year

Ludington Park Tennis Court- Reconstructed 2021-2022 fiscal year

Ludington Park Basketball Court- Resealed 2014-2015 fiscal year

1 Boardwalk with Integrated Fishing Piers Along Lake Michigan's Shoreline at Aronson Island | Install an ADA accessible walkway from the marina facility to the bridge on Aronson Island. Situated along the inner harbor section of Lake Michigan's shoreline, the project will showcasing views of the lake. Integrate ADA accessible fishing piers along the shoreline of Aronson Island paired with efforts to clean and improve habitat for fish. Administration will look into ways to fund paddle board and kayak rentals at the Municipal Beach area in addition to installing an ADA accessible kayak launch.

1 Dedicated Pickleball Courts | Citizens are seeking dedicated pickleball courts. Pickleball is the fastest growing sport in the United States.

1 Escanaba Migratory Bird Enhancement Initiative (EMBEI) | Continue to support this partnership utilizing community support to enhance bird habitat through planting of native species, control of invasive species, and the placement of nest boxes for cavity nesting birds.

1 Restroom Upgrade | Municipal Dock restrooms require a total renovation.

1 Define Park Property Boundaries | Some of the City owned properties are not clearly identified. Create a clear and comprehensive signage plan to properly mark park properties and their boundaries.

1 Catherine Bonifas Civic Center Repairs | The west side of the civic center needs windows replaced.

1 Ludington Park Restroom Remodel | This may require demolition and reconstruction of a new restroom facility.

1 Ludington Park Pavilion Electrical Upgrades | The pavilion blows fuses and needs an electrical upgrade.

1



Action Plan

Priority (1 is highest priority and 3 is lowest priority)	Possible funding Source
<p>2 Lighting Inventory Consider LED or Solar fixtures and bat/dark sky friendly. Look into potential savings to turn lights off after a certain hour. The community is very excited to one day host dark sky events. A dark sky friendly city lighting plan would first need to be installed.</p>	Private Donation/ Grants/General Fund
<p>2 Create Walking Trails Outside of the West Side Trail Area Example: Trail along the lakeshore in Ludington Park</p>	Private Donation/ Grants/General Fund
<p>2 Pier 3 Restroom Facility The Marina would like to build a 19' by 34' permanent restroom structure south of Pier 3.</p>	Private Donation/ Grants/General Fund
<p>2 Aronson Island Restrooms The two holding tanks on Aronson Island were filled with sand and covered with a concrete slab for placement of the Port-a-John. The community would like to see a permanent restroom here. Include landscape improvements.</p>	Private Donation/ Grants/General Fund
<p>2 West Side Recreation Area Assess Ski Trails Redirect the trails to avoid the wetland or improve the trail conditions.</p>	Private Donation/ Grants/General Fund
<p>2 Marina Improvements Additional parking along Jenkins Drive and near Pier 3. Curb will be extended approximately 20' toward the bike path to create approximately 42 spaces. Identify two spaces for unloading areas, with time limit signs posted.</p>	Private Donation/ Grants/General Fund

Action Plan

Priority (1 is highest priority and 3 is lowest priority)	Possible funding Source
3 Pump Track, Skate Park, or BMX Track Identify a proper location and install a skate, scooter and/or bike friendly track for multiple ability levels and generations to practice and play.	Private Donation/ Grants/General Fund
3 Municipal Dock Safety Barrier Install safety barrier at the Municipal Dock to allow for an ADA accessible, safe pathway along the dock. Fishing piers and interpretive signage to be integrated into the project	Private Donation/ Grants/General Fund
3 Additional Pavilion at Ludington Park Construction of a pavilion near the gazebo/marina area to bring activity into the park on this end. The covered pavilion would be rented out and include water and electricity. Landscaping and accessible picnic tables will also be integrated into the design	Private Donation/ Grants/General Fund
3 Dickson Field Improvements Plumbing upgrades need to be addressed to ensure the concession area can run properly	Private Donation/ Grants/General Fund
3 Electric Bike Share Create a more accessible bike share program in Ludington Park to provide ease of access to the downtown area for visitors and community members alike. Electric-Assist bikes could be checked out and dropped off almost anywhere as they would be paired with tracking devices.	Private Donation/ General Fund

Appendix B

DNR GRANT HISTORY

PROJECT NUMBER: 26-01215

SAND ISLAND BOAT LAUNCH

Project Year: 1981

Project Description: Develop launch ramp, parking area with curb stops, skid pier, vault toilets, access road and LWCF sign

Grant Amount: \$28,290.63

Project Status: Closed

PROJECT NUMBER: 26-01264

WEBSTER PARK SHELTER HOUSE

Project Year: 1983

Project Description: Demolition of existing shelter, construction of new shelter house with utilities, removal of overhead power lines, parking improvements, fencing and barrier posts, LWCF sign

Grant Amount: \$40,533.00

Project Status: Closed

PROJECT NUMBER: 26-01328

LUDINGTON PARK RESTROOMS

Project Year: 1984

Project Description: Develop toilet building, site, + utilities

Grant Amount: \$50,597.00

Project Status: Closed

PROJECT NUMBER: TF87-240

ESCANABA MUNICIPAL MARINA

Project Year: 1987

Project Description: Install 500' floating head pier systems, utilities, demolition and replacement of revetment wall.

Grant Amount: \$300,000

Project Status: Closed

Project Number: 26-01481

Escanaba Municipal Beach

Project Year: 1988

Project Description: Development of concrete rubble on beachfront, beach fill, fencing, boardwalk, beach grass, landscaping + parking lots at Escanaba Municipal Beach

Grant Amount: \$50,037.00

Project Status: Closed

PROJECT NUMBER: BF89-555

LUDINGTON PARK

Project Year: 1989

Project Description: Replace electric and potable water systems to bandshell and tennis courts

Grant Amount: \$37,500.00

Project Status: Closed

PROJECT NUMBER: TF90-365

WALCH ESTATE PROPERTY

Project Year: 1990

Project Description: Acquire 240 acres currently leased by the City to preserve wetlands and cross-country ski path.

Grant Amount: \$22,500.00

Project Status: Closed

PROJECT NUMBER: BF91-329

LUDINGTON PARK PLAYGROUND

Project Year: 1991

Project Description: Renovate and replace playground equipment and related equipment at the tot lot and municipal beach

Grant Amount: \$22,500.00

Project Status: Closed



DNR GRANT HISTORY

PROJECT NUMBER: TF97-088

LUDINGTON PARK BIKE PATH/WALKWAY PROJECT

Project Year: 1997

Project Description: Construct 1,300 ft bike path/walkway providing access to historical and interpretive features

Grant Amount: \$17,500.00

Project Status: Closed

Project Number: CM99-281

Ludington Park Pathway and Parking

Project Year: 1999

Project Description: Renovate Aronson Isl. Bike/Pedestrian Pathway + upgrade bandshell parking lot

Grant Amount: \$131,250.00

Project Status: Closed

PROJECT NUMBER: TF99-384

ESCANABA RIVERFRONT PROPERTY ACQUISITION

Project Year: 1999

Project Description: Acquisition in fee simple of about 12 acres of riverfront property at the mouth of the Escanaba River for construction of a large capacity small boat launch site for access to the Escanaba River and Little Bay de Noc

Grant Amount: \$102,750.00

Project Status: Closed

PROJECT NUMBER: TF00-185

LUDINGTON BEACH HOUSE RENOVATION

Project Year: 2000

Project Description: Renovation of Ludington Park beach house to meet current standards for safety and accessibility

Grant Amount: \$192,500.00

Project Status: Closed

PROJECT NUMBER: 26-016XX1

SOCCER FIELD COMPLEX

Project Year: 2002

Project Description: Develop 2 regulation soccer fields on S. 28th to serve entire region

Grant Amount: \$37,500.00

Project Status: Withdrawn

PROJECT NUMBER: RP13-481

LUDINGTON PARK TENNIS COURTS RENOVATION

Project Year: 2013

Project Description: ADA access to courts/bathrooms, and renovate 4 tennis and 1 basketball courts, ADA drinking fountain and picnic tables

Grant Amount: \$42,000.00

Project Status: Closed

Project Number: RP16-0133

Escanaba Marketplace Play and Park Structure

Project Year: 2016

Project Description: Develop new play equipment and access pathways

Grant Amount: \$45,000.00

Project Status: Closed